

Anti-PRLR / Prolactin Receptor Reference Antibody (BAY 1158061)

Recombinant Antibody
Catalog # APR10532

Product Information

Application	FC, Kinetics, Animal Model
Primary Accession	P16471
Reactivity	Human, Mouse
Clonality	Monoclonal
Isotype	IgG1
Calculated MW	69506

Additional Information

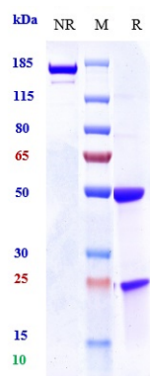
Target/Specificity	PRLR / Prolactin Receptor
Endotoxin Conjugation	Unconjugated
Expression system	CHO Cell
Format	Purified monoclonal antibody supplied in PBS, pH6.0, without preservative. This antibody is purified through a protein A column.

Protein Information

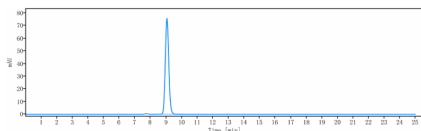
Name	PRLR
Function	This is a receptor for the anterior pituitary hormone prolactin (PRL). Acts as a prosurvival factor for spermatozoa by inhibiting sperm capacitation through suppression of SRC kinase activation and stimulation of AKT. Isoform 4 is unable to transduce prolactin signaling. Isoform 6 is unable to transduce prolactin signaling.
Cellular Location	Membrane; Single-pass type I membrane protein
Tissue Location	Expressed in breast, placenta, kidney, liver and pancreas.

Images

Anti-PRLR / Prolactin Receptor Reference Antibody (BAY 1158061) on SDS-PAGE under reducing (R) condition. The



gel was stained with Coomassie Blue. The purity of the protein is greater than 90%



The purity of Anti-PRLR / Prolactin Receptor Reference Antibody (BAY 1158061) is more than 95% ,determined by SEC-HPLC.

Please note: All products are 'FOR RESEARCH USE ONLY. NOT FOR USE IN DIAGNOSTIC OR THERAPEUTIC PROCEDURES'.