

# Anti-EphA3 Reference Antibody (ifabotuzumab)

Recombinant Antibody  
Catalog # APR10514

## Product Information

---

<b>Application</b>	FC, Kinetics, Animal Model
<b>Primary Accession</b>	<a href="#">P29320</a>
<b>Reactivity</b>	Human, Mouse
<b>Clonality</b>	Monoclonal
<b>Isotype</b>	IgG1
<b>Calculated MW</b>	110131

## Additional Information

---

<b>Target/Specificity</b>	EphA3
<b>Endotoxin Conjugation</b>	Unconjugated
<b>Expression system</b>	CHO Cell
<b>Format</b>	Purified monoclonal antibody supplied in PBS, pH6.0, without preservative. This antibody is purified through a protein A column.

## Protein Information

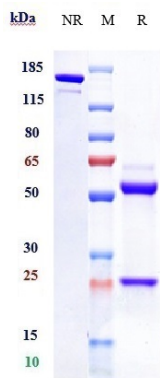
---

<b>Name</b>	EPHA3
<b>Synonyms</b>	ETK, ETK1, HEK, TYRO4
<b>Function</b>	Receptor tyrosine kinase which binds promiscuously membrane-bound ephrin family ligands residing on adjacent cells, leading to contact-dependent bidirectional signaling into neighboring cells. The signaling pathway downstream of the receptor is referred to as forward signaling while the signaling pathway downstream of the ephrin ligand is referred to as reverse signaling (PubMed: <a href="#">11870224</a> , PubMed: <a href="#">12794130</a> ). Highly promiscuous for ephrin-A ligands it binds preferentially EFNA5 (By similarity). Upon activation by EFNA5 regulates cell-cell adhesion, cytoskeletal organization and cell migration (PubMed: <a href="#">11870224</a> ). Also activated by EFNA1, inhibiting epithelial-to-mesenchymal transition of cardiac cells and playing a role in heart development (PubMed: <a href="#">12794130</a> ). Involved in the retinotectal mapping of neurons. May also control the segregation but not the guidance of motor and sensory axons during neuromuscular circuit development (By similarity).
<b>Cellular Location</b>	[Isoform 1]: Cell membrane; Single-pass type I membrane protein  Widely expressed. Highest level in placenta.

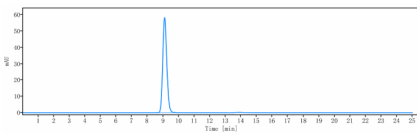
## Tissue Location

## Images

---



Anti-EphA3 Reference Antibody (ifabotuzumab) on SDS-PAGE under reducing (R) condition. The gel was stained with Coomassie Blue. The purity of the protein is greater than 95%



The purity of Anti-EphA3 Reference Antibody (ifabotuzumab) is more than 95%, determined by SEC-HPLC.

Please note: All products are 'FOR RESEARCH USE ONLY. NOT FOR USE IN DIAGNOSTIC OR THERAPEUTIC PROCEDURES'.