

Anti-IgE Reference Antibody (omalizumab)

Recombinant Antibody
Catalog # APR10432

Product Information

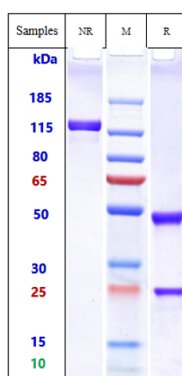
Application	FC, Kinetics, Animal Model
Primary Accession	P0DOX4
Reactivity	Human, Mouse
Clonality	Monoclonal
Isotype	IgG1
Calculated MW	146 kDa

Additional Information

Target/Specificity	IgE
Endotoxin Conjugation	Unconjugated
Expression system	CHO Cell
Format	Purified monoclonal antibody supplied in PBS, pH6.0, without preservative. This antibody is purified through a protein A column.

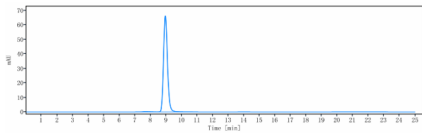
Protein Information

Images



Anti-IgE Reference Antibody (omalizumab) on SDS-PAGE under reducing (R) condition. The gel was stained with Coomassie Blue. The purity of the protein is greater than 95%

The purity of Anti-IgE Reference Antibody (omalizumab) is more than 95%, determined by SEC-HPLC.



Please note: All products are 'FOR RESEARCH USE ONLY. NOT FOR USE IN DIAGNOSTIC OR THERAPEUTIC PROCEDURES'.