

Anti-NaPi2b / SLC34A2 Reference Antibody (lifastuzumab vedotin)

Recombinant Antibody
Catalog # APR10424

Product Information

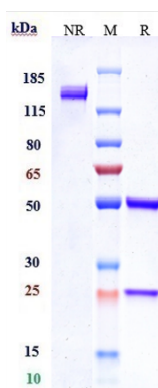
Application	FC, Kinetics, Animal Model
Primary Accession	O95436
Reactivity	Human
Clonality	Monoclonal
Isotype	IgG1
Calculated MW	145 KDa

Additional Information

Target/Specificity	NaPi2b / SLC34A2
Endotoxin Conjugation	MMAE
Expression system	CHO Cell
Format	Purified monoclonal antibody supplied in PBS, pH6.0, without preservative. This antibody is purified through a protein A column.

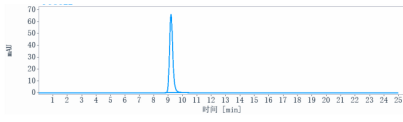
Protein Information

Images



Anti-NaPi2b / SLC34A2 Reference Antibody (lifastuzumab vedotin) on SDS-PAGE under reducing (R) condition. The gel was stained with Coomassie Blue. The purity of the protein is greater than 90%

The purity of Anti-NaPi2b / SLC34A2 Reference Antibody



(lifastuzumab vedotin) is more than 95% ,determined by SEC-HPLC.

Please note: All products are 'FOR RESEARCH USE ONLY. NOT FOR USE IN DIAGNOSTIC OR THERAPEUTIC PROCEDURES'.