

Anti-TPBG Reference Antibody (naptumomAb)

Recombinant Antibody
Catalog # APR10423

Product Information

Application	FC, Kinetics, Animal Model
Primary Accession	Q13641
Reactivity	Human
Clonality	Monoclonal
Isotype	IgG1
Calculated MW	46032

Additional Information

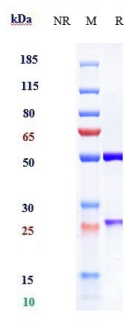
Target/Specificity	TPBG
Endotoxin Conjugation	Unconjugated
Expression system	CHO Cell
Format	Purified monoclonal antibody supplied in PBS, pH6.0, without preservative. This antibody is purified through a protein A column.

Protein Information

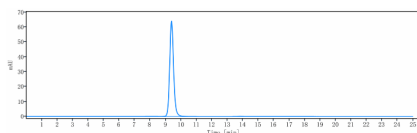
Name	TPBG
Synonyms	5T4
Function	May function as an inhibitor of Wnt/beta-catenin signaling by indirectly interacting with LRP6 and blocking Wnt3a-dependent LRP6 internalization.
Cellular Location	Cell membrane; Single-pass type I membrane protein
Tissue Location	Expressed by all types of trophoblasts as early as 9 weeks of development. Specific for trophoblastic cells except for amniotic epithelium. In adult tissues, the expression is limited to a few epithelial cell types but is found on a variety of carcinoma

Images

Anti-TPBG Reference Antibody (naptumomAb) on
SDS-PAGE under reducing (R) condition. The gel was



stained with Coomassie Blue. The purity of the protein is greater than 90%



The purity of Anti-TPBG Reference Antibody (naptumomAb) is more than 95% ,determined by SEC-HPLC.

Please note: All products are 'FOR RESEARCH USE ONLY. NOT FOR USE IN DIAGNOSTIC OR THERAPEUTIC PROCEDURES'.