

# Anti-NOTCH3 Reference Antibody (tarextumab)

Recombinant Antibody  
Catalog # APR10410

## Product Information

---

<b>Application</b>	FC, Kinetics, Animal Model
<b>Primary Accession</b>	<a href="#">Q9UM47</a>
<b>Reactivity</b>	Human, Mouse
<b>Clonality</b>	Monoclonal
<b>Isotype</b>	IgG2SA
<b>Calculated MW</b>	243631

## Additional Information

---

<b>Target/Specificity</b>	NOTCH3
<b>Endotoxin Conjugation</b>	Unconjugated
<b>Expression system</b>	CHO Cell
<b>Format</b>	Purified monoclonal antibody supplied in PBS, pH6.0, without preservative. This antibody is purified through a protein A column.

## Protein Information

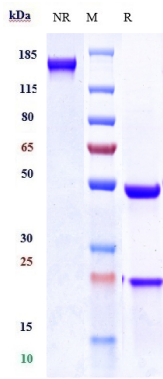
---

<b>Name</b>	NOTCH3
<b>Function</b>	Functions as a receptor for membrane-bound ligands Jagged1, Jagged2 and Delta1 to regulate cell-fate determination (PubMed: <a href="#">15350543</a> , PubMed: <a href="#">14714274</a> ). Upon ligand activation through the released notch intracellular domain (NICD), it forms a transcriptional activator complex with RBPJ/RBPSUH and activates genes of the enhancer of split locus. Affects the implementation of differentiation, proliferation and apoptotic programs (By similarity).
<b>Cellular Location</b>	Cell membrane; Single-pass type I membrane protein
<b>Tissue Location</b>	Ubiquitously expressed in fetal and adult tissues.

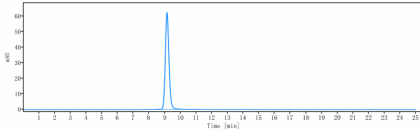
## Images

---

Anti-NOTCH3 Reference Antibody (tarextumab) on SDS-PAGE under reducing (R) condition. The gel was



stained with Coomassie Blue. The purity of the protein is greater than 95%



The purity of Anti-NOTCH3 Reference Antibody (tarextumab) is more than 99.3% ,determined by SEC-HPLC.

Please note: All products are 'FOR RESEARCH USE ONLY. NOT FOR USE IN DIAGNOSTIC OR THERAPEUTIC PROCEDURES'.