

Anti-MADCAM1 Reference Antibody (ontamalimab)

Recombinant Antibody

Catalog # APR10396

Product Information

Application	FC, Kinetics, Animal Model
Primary Accession	Q13477
Reactivity	Human
Clonality	Monoclonal
Isotype	IgG2SA
Calculated MW	40155

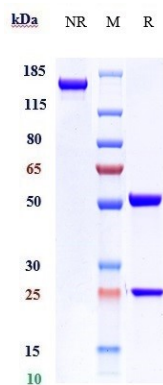
Additional Information

Target/Specificity	MADCAM1
Endotoxin Conjugation	Unconjugated
Expression system	CHO Cell
Format	Purified monoclonal antibody supplied in PBS, pH6.0, without preservative. This antibody is purified through a protein A column.

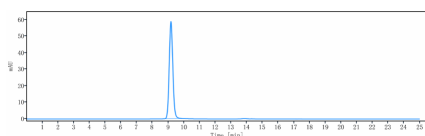
Protein Information

Name	MADCAM1
Function	Cell adhesion leukocyte receptor expressed by mucosal venules, helps to direct lymphocyte traffic into mucosal tissues including the Peyer patches and the intestinal lamina propria. It can bind both integrin alpha-4/beta-7 and L-selectin, regulating both the passage and retention of leukocytes. Isoform 2, lacking the mucin-like domain, may be specialized in supporting integrin alpha-4/beta-7- dependent adhesion strengthening, independent of L-selectin binding.
Cellular Location	Membrane; Single-pass type I membrane protein.
Tissue Location	Highly expressed on high endothelial venules (HEV) and lamina propria venules found in the small intestine, and to a lesser extent in the colon and spleen. Very low levels of expression found in pancreas and brain. Not expressed in the thymus, prostate, ovaries, testis, heart, placenta, lung, liver, skeletal muscle, kidney or peripheral blood leukocytes.

Images



Anti-MADCAM1 Reference Antibody (ontamalimab) on SDS-PAGE under reducing (R) condition. The gel was stained with Coomassie Blue. The purity of the protein is greater than 95%



The purity of Anti-MADCAM1 Reference Antibody (ontamalimab) is more than 100% ,determined by SEC-HPLC.

Please note: All products are 'FOR RESEARCH USE ONLY. NOT FOR USE IN DIAGNOSTIC OR THERAPEUTIC PROCEDURES'.