

# Anti-Integrin $\alpha$ 4 $\beta$ 7 (ITGA4 & ITGB7) Reference Antibody (etrolizumab)

Recombinant Antibody  
Catalog # APR10351

## Product Information

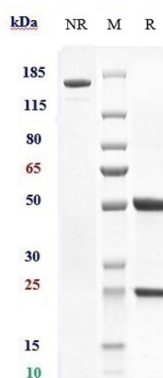
<b>Application</b>	FC, Kinetics, Animal Model
<b>Primary Accession</b>	<a href="#">P13612 &amp; P26010</a>
<b>Reactivity</b>	Human
<b>Clonality</b>	Monoclonal
<b>Isotype</b>	IgG1
<b>Calculated MW</b>	144 KDa

## Additional Information

<b>Target/Specificity</b>	Integrin $\alpha$ 4 $\beta$ 7 (ITGA4 & ITGB7)
<b>Endotoxin Conjugation</b>	Unconjugated
<b>Expression system</b>	CHO Cell
<b>Format</b>	Purified monoclonal antibody supplied in PBS, pH6.0, without preservative. This antibody is purified through a protein A column.

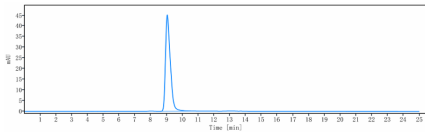
## Protein Information

## Images



Anti-Integrin  $\alpha$ 4 $\beta$ 7 (ITGA4 & ITGB7) Reference Antibody (etrolizumab) on SDS-PAGE under reducing (R) condition. The gel was stained with Coomassie Blue. The purity of the protein is greater than 95%

The purity of Anti-Integrin  $\alpha$ 4 $\beta$ 7 (ITGA4 & ITGB7)



Reference Antibody (etrolizumab) is more than 100%  
,determined by SEC-HPLC.

Please note: All products are 'FOR RESEARCH USE ONLY. NOT FOR USE IN DIAGNOSTIC OR THERAPEUTIC PROCEDURES'.