

Anti-CDH11 / Cadherin-11 Reference Antibody (RG6125)

Recombinant Antibody

Catalog # APR10333

Product Information

Application	FC, Kinetics, Animal Model
Primary Accession	P55287
Reactivity	Human, Mouse
Clonality	Monoclonal
Isotype	IgG2SA
Calculated MW	87965

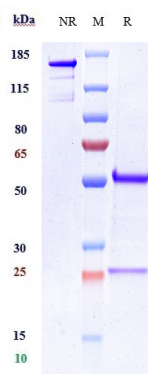
Additional Information

Target/Specificity	CDH11 / Cadherin-11
Endotoxin	
Conjugation	Unconjugated
Expression system	CHO Cell
Format	Purified monoclonal antibody supplied in PBS, pH6.0, without preservative. This antibody is purified through a protein A column.

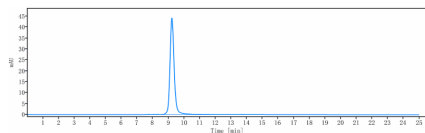
Protein Information

Name	CDH11
Function	Cadherins are calcium-dependent cell adhesion proteins. They preferentially interact with themselves in a homophilic manner in connecting cells; cadherins may thus contribute to the sorting of heterogeneous cell types. Required for proper focal adhesion assembly (PubMed: 33811546). Involved in the regulation of cell migration (PubMed: 33811546).
Cellular Location	Cell membrane; Single-pass type I membrane protein
Tissue Location	Expressed mainly in brain but also found in other tissues. Expressed in neuroblasts. In the embryo from 67 to 72 days of gestation, detected at high levels in facial mesenchyme including the central palatal mesenchyme, dental mesenchyme, the eye and optic muscle, and the tongue (at protein level) (PubMed: 33811546)

Images



Anti-CDH11 / Cadherin-11 Reference Antibody (RG6125) on SDS-PAGE under reducing (R) condition. The gel was stained with Coomassie Blue. The purity of the protein is greater than 95%



The purity of Anti-CDH11 / Cadherin-11 Reference Antibody (RG6125) is more than 95% ,determined by SEC-HPLC.

Please note: All products are 'FOR RESEARCH USE ONLY. NOT FOR USE IN DIAGNOSTIC OR THERAPEUTIC PROCEDURES'.