

Anti-BTLA / CD272 Reference Antibody (Tifcemalimab)

Recombinant Antibody
Catalog # APR10320

Product Information

| | |
|--------------------------|----------------------------|
| Application | FC, Kinetics, Animal Model |
| Primary Accession | Q7Z6A9 |
| Reactivity | Human |
| Clonality | Monoclonal |
| Isotype | IgG4 |
| Calculated MW | 32834 |

Additional Information

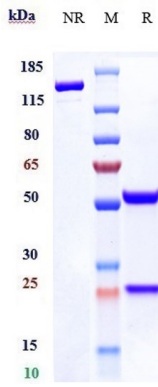
| | |
|------------------------------|--|
| Target/Specificity | BTLA / CD272 |
| Endotoxin Conjugation | Unconjugated |
| Expression system | CHO Cell |
| Format | Purified monoclonal antibody supplied in PBS, pH6.0, without preservative. This antibody is purified through a protein A column. |

Protein Information

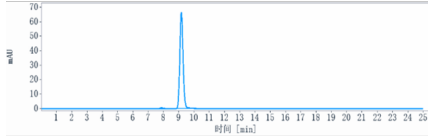
| | |
|--------------------------|---|
| Name | BTLA {ECO:0000303 PubMed:12796776, ECO:0000312 HGNC:HGNC:21087} |
| Function | Inhibitory receptor on lymphocytes that negatively regulates antigen receptor signaling via PTPN6/SHP-1 and PTPN11/SHP-2 (PubMed: 12796776 , PubMed: 14652006 , PubMed: 15568026 , PubMed: 18193050). May interact in cis (on the same cell) or in trans (on other cells) with TNFRSF14 (PubMed: 19915044). In cis interactions, appears to play an immune regulatory role inhibiting in trans interactions in naive T cells to maintain a resting state. In trans interactions, can predominate during adaptive immune response to provide survival signals to effector T cells (PubMed: 19915044). |
| Cellular Location | Cell membrane; Single-pass type I membrane protein |

Images

Anti-BTLA / CD272 Reference Antibody (Tifcemalimab) on SDS-PAGE under reducing (R) condition. The gel was stained with Coomassie Blue. The purity of the protein is



greater than 95%



The purity of Anti-BTLA / CD272 Reference Antibody (Tifcemalimab) is more than 98.17% ,determined by SEC-HPLC.

Please note: All products are 'FOR RESEARCH USE ONLY. NOT FOR USE IN DIAGNOSTIC OR THERAPEUTIC PROCEDURES'.