

# Anti-CALCA / CGRP Reference Antibody (eptinezumab)

Recombinant Antibody

Catalog # APR10286

## Product Information

---

<b>Application</b>	FC, Kinetics, Animal Model
<b>Primary Accession</b>	<a href="#">P06881</a>
<b>Reactivity</b>	Human, Rat
<b>Clonality</b>	Monoclonal
<b>Isotype</b>	IgG1
<b>Calculated MW</b>	13899

## Additional Information

---

<b>Target/Specificity</b>	CALCA / CGRP
<b>Endotoxin Conjugation</b>	Unconjugated
<b>Expression system</b>	CHO Cell
<b>Format</b>	Purified monoclonal antibody supplied in PBS, pH6.0, without preservative. This antibody is purified through a protein A column.

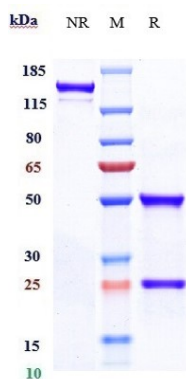
## Protein Information

---

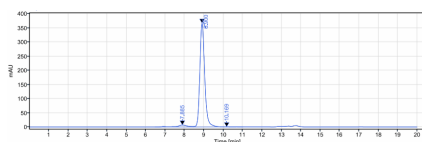
<b>Name</b>	CALCA ( <a href="#">HGNC:1437</a> )
<b>Synonyms</b>	CALC1
<b>Function</b>	CGRP1/CALCA is a peptide hormone that induces vasodilation mediated by the CALCRL-RAMP1 receptor complex (PubMed: <a href="#">1318039</a> , PubMed: <a href="#">33602864</a> , PubMed: <a href="#">9620797</a> ). Dilates a variety of vessels including the coronary, cerebral and systemic vasculature. Its abundance in the CNS also points toward a neurotransmitter or neuromodulator role (PubMed: <a href="#">3492492</a> ). It also elevates platelet cAMP (PubMed: <a href="#">1318039</a> ). CGRP1 can also bind and activate CALCR-RAMP1 (AMYR1) receptor complex (PubMed: <a href="#">38603770</a> ).
<b>Cellular Location</b>	Secreted.
<b>Tissue Location</b>	Expressed in spinal cord.

## Images

---



Anti-CALCA / CGRP Reference Antibody (eptinezumab) on SDS-PAGE under reducing (R) condition. The gel was stained with Coomassie Blue. The purity of the protein is greater than 95%



The purity of Anti-CALCA / CGRP Reference Antibody (eptinezumab) is more than 95.91%, determined by SEC-HPLC.

Please note: All products are 'FOR RESEARCH USE ONLY. NOT FOR USE IN DIAGNOSTIC OR THERAPEUTIC PROCEDURES'.