

Anti-NaPi2b / SLC34A2 Reference Antibody (upifitamab)

Recombinant Antibody
Catalog # APR10260

Product Information

Application	FC, Kinetics, Animal Model
Primary Accession	O95436
Reactivity	Human
Clonality	Monoclonal
Isotype	IgG1
Calculated MW	75759

Additional Information

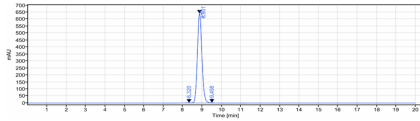
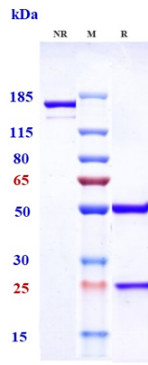
Target/Specificity	NaPi2b / SLC34A2
Endotoxin Conjugation	Unconjugated
Expression system	CHO Cell
Format	Purified monoclonal antibody supplied in PBS, pH6.0, without preservative. This antibody is purified through a protein A column.

Protein Information

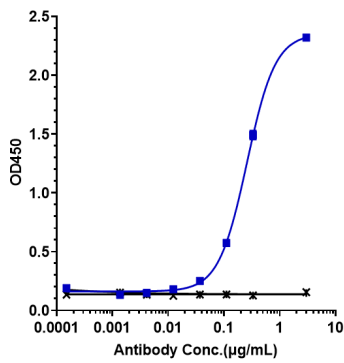
Name	SLC34A2
Function	Involved in actively transporting phosphate into cells via Na(+) cotransport.
Cellular Location	Apical cell membrane {ECO:0000250 UniProtKB:Q9DBP0}; Multi-pass membrane protein. Note=Localized at the brush border membranes of enterocytes. {ECO:0000250 UniProtKB:Q9DBP0}
Tissue Location	Highly expressed in lung. Also detected in pancreas, kidney, small intestine, ovary, testis, prostate and mammary gland. In lung, it is found in alveolar type II cells but not in bronchiolar epithelium.

Images

Anti-NaPi2b / SLC34A2 Reference Antibody (upifitamab) on SDS-PAGE under reducing (R) condition. The gel was stained with Coomassie Blue. The purity of the protein is greater than 95%



The purity of Anti-NaPi2b / SLC34A2 Reference Antibody (upifitamab) is more than 99.42% ,determined by SEC-HPLC.



Immobilized human SLC34A2(188 361aa) Fc at 2 µg/mL can bind Anti-NaPi2b / SLC34A2 Reference Antibody (upifitamab),EC50=0.259 µg/mL

Please note: All products are 'FOR RESEARCH USE ONLY. NOT FOR USE IN DIAGNOSTIC OR THERAPEUTIC PROCEDURES'.