

Anti-CD3e Reference Antibody (foralumab)

Recombinant Antibody

Catalog # APR10253

Product Information

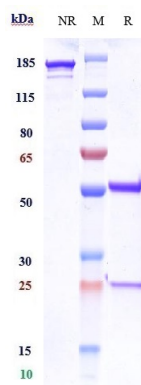
Application	FC, Kinetics, Animal Model
Primary Accession	P07766
Reactivity	Human, Mouse
Clonality	Monoclonal
Isotype	IgG1
Calculated MW	145 KDa

Additional Information

Target/Specificity	CD3e
Endotoxin	
Conjugation	Unconjugated
Expression system	CHO Cell
Format	Purified monoclonal antibody supplied in PBS, pH6.0, without preservative. This antibody is purified through a protein A column.

Protein Information

Images



Anti-CD3e Reference Antibody (foralumab) on SDS-PAGE under reducing (R) condition. The gel was stained with Coomassie Blue. The purity of the protein is greater than 95%

The purity of Anti-CD3e Reference Antibody (foralumab) is more than 95%, determined by SEC-HPLC.

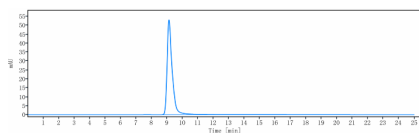


Image not found : 202311/AP90252-3.jpg

Immobilized Recombinant human CD3D&CD3E at 2 $\mu\text{g/mL}$ can bind Anti-CD3e Reference Antibody (foralumab), $\text{EC}_{50}=7.837 \mu\text{g/mL}$

Please note: All products are 'FOR RESEARCH USE ONLY. NOT FOR USE IN DIAGNOSTIC OR THERAPEUTIC PROCEDURES'.