

Anti-Amyloid Alpha Reference Antibody (birtamimab)

Recombinant Antibody

Catalog # APR10235

Product Information

| | |
|--------------------------|----------------------------|
| Application | FC, Kinetics, Animal Model |
| Primary Accession | P0DJ18 |
| Reactivity | Human, Mouse |
| Clonality | Monoclonal |
| Isotype | IgG1 |
| Calculated MW | 13546 |

Additional Information

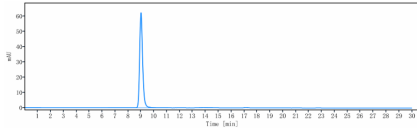
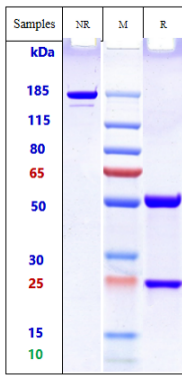
| | |
|---------------------------|--|
| Target/Specificity | Amyloid Alpha |
| Endotoxin | |
| Conjugation | Unconjugated |
| Expression system | CHO Cell |
| Format | Purified monoclonal antibody supplied in PBS, pH6.0, without preservative. This antibody is purified through a protein A column. |

Protein Information

| | |
|--------------------------|--|
| Name | SAA1 |
| Function | Major acute phase protein. |
| Cellular Location | Secreted. |
| Tissue Location | Expressed by the liver; secreted in plasma (at protein level). |

Images

Anti-Amyloid Alpha Reference Antibody (birtamimab) on SDS-PAGE under reducing (R) condition. The gel was stained with Coomassie Blue. The purity of the protein is greater than 95%



The purity of Anti-Amyloid Alpha Reference Antibody (birtamimab) is more than 99.11% ,determined by SEC-HPLC.

Image not found : 202311/AP90234-3.jpg

Immobilized N His HSA human Amyloid beta(APP) at 2 $\mu\text{g/mL}$ can bind Anti-Amyloid Alpha Reference Antibody (birtamimab), $\text{EC}_{50}=4.742 \mu\text{g/mL}$

Please note: All products are 'FOR RESEARCH USE ONLY. NOT FOR USE IN DIAGNOSTIC OR THERAPEUTIC PROCEDURES'.