

Anti-SLITRK6 Reference Antibody (sirtratumab)

Recombinant Antibody
Catalog # APR10212

Product Information

Application	FC, Kinetics, Animal Model
Primary Accession	Q9H5Y7
Reactivity	Human
Clonality	Monoclonal
Isotype	IgG2SA
Calculated MW	95110

Additional Information

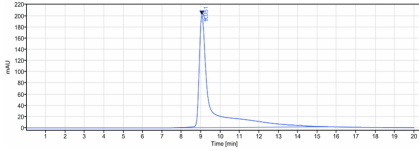
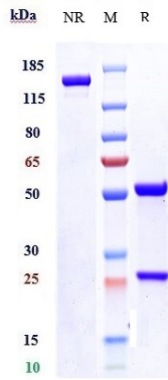
Target/Specificity	SLITRK6
Endotoxin Conjugation	Unconjugated
Expression system	CHO Cell
Format	Purified monoclonal antibody supplied in PBS, pH6.0, without preservative. This antibody is purified through a protein A column.

Protein Information

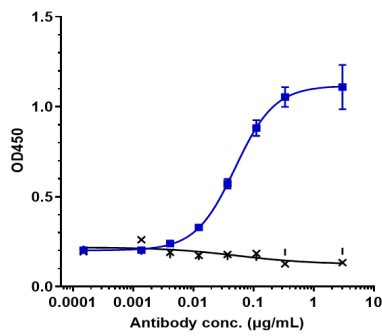
Name	SLITRK6
Function	Regulator of neurite outgrowth required for normal hearing and vision.
Cellular Location	Cell membrane; Single-pass type I membrane protein
Tissue Location	In adult brain, highly expressed in putamen with no expression in cerebral cortex. Expressed in adult and fetal lung and fetal liver. Also expressed at high levels in some brain tumors including medulloblastomas and primitive neuroectodermal tumors

Images

Anti-SLITRK6 Reference Antibody (sirtratumab) on SDS-PAGE under reducing (R) condition. The gel was stained with Coomassie Blue. The purity of the protein is greater than 95%



The purity of Anti-SLITRK6 Reference Antibody (sirtratumab) is more than 100% ,determined by SEC-HPLC.



Immobilized human SLITRK6 His at 2 µg/mL can bind Anti-SLITRK6 Reference Antibody (sirtratumab),EC50=0.04938 µg/mL

Please note: All products are 'FOR RESEARCH USE ONLY. NOT FOR USE IN DIAGNOSTIC OR THERAPEUTIC PROCEDURES'.