

# Anti-PRLR / Prolactin Receptor Reference Antibody (rolinsatamab)

Recombinant Antibody  
Catalog # APR10204

## Product Information

---

<b>Application</b>	FC, Kinetics, Animal Model
<b>Primary Accession</b>	<a href="#">P16471</a>
<b>Reactivity</b>	Human
<b>Clonality</b>	Monoclonal
<b>Isotype</b>	IgG1
<b>Calculated MW</b>	69506

## Additional Information

---

<b>Target/Specificity</b>	PRLR / Prolactin Receptor
<b>Endotoxin Conjugation</b>	Unconjugated
<b>Expression system</b>	CHO Cell
<b>Format</b>	Purified monoclonal antibody supplied in PBS, pH6.0, without preservative. This antibody is purified through a protein A column.

## Protein Information

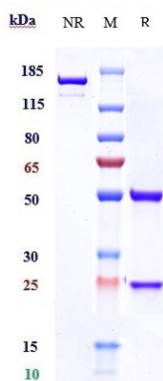
---

<b>Name</b>	PRLR
<b>Function</b>	This is a receptor for the anterior pituitary hormone prolactin (PRL). Acts as a prosurvival factor for spermatozoa by inhibiting sperm capacitation through suppression of SRC kinase activation and stimulation of AKT. Isoform 4 is unable to transduce prolactin signaling. Isoform 6 is unable to transduce prolactin signaling.
<b>Cellular Location</b>	Membrane; Single-pass type I membrane protein
<b>Tissue Location</b>	Expressed in breast, placenta, kidney, liver and pancreas.

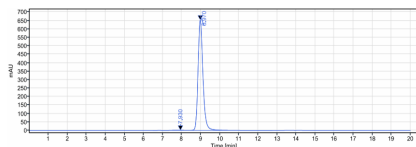
## Images

---

Anti-PRLR / Prolactin Receptor Reference Antibody  
(rolinsatamab) on SDS-PAGE under reducing (R)



condition. The gel was stained with Coomassie Blue. The purity of the protein is greater than 95%



The purity of Anti-PRLR / Prolactin Receptor Reference Antibody (rolinsatamab) is more than 91.67% ,determined by SEC-HPLC.

Image not found : 202311/AP90203-3.jpg

Immobilized human PRLR FC at 2  $\mu\text{g/mL}$  can bind Anti-PRLR / Prolactin Receptor Reference Antibody (rolinsatamab),  $\text{EC}_{50}=0.02507 \mu\text{g/mL}$

Please note: All products are 'FOR RESEARCH USE ONLY. NOT FOR USE IN DIAGNOSTIC OR THERAPEUTIC PROCEDURES'.