

Anti-CLDN18.2 Reference Antibody (zolbetuximab)

Recombinant Antibody

Catalog # APR10189

Product Information

Application	FC, Kinetics, Animal Model
Primary Accession	P56856
Reactivity	Human, Mouse
Clonality	Monoclonal
Isotype	IgG1
Calculated MW	27856

Additional Information

Target/Specificity	CLDN18.2
Endotoxin	
Conjugation	Unconjugated
Expression system	CHO Cell
Format	Purified monoclonal antibody supplied in PBS, pH6.0, without preservative. This antibody is purified through a protein A column.

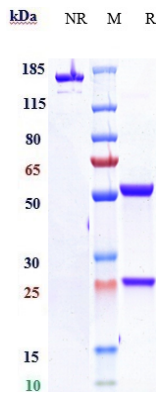
Protein Information

Name	CLDN18
Function	Involved in alveolar fluid homeostasis via regulation of alveolar epithelial tight junction composition and therefore ion transport and solute permeability, potentially via downstream regulation of the actin cytoskeleton organization and beta-2-adrenergic signaling (By similarity). Required for lung alveolarization and maintenance of the paracellular alveolar epithelial barrier (By similarity). Acts to maintain epithelial progenitor cell proliferation and organ size, via regulation of YAP1 localization away from the nucleus and thereby restriction of YAP1 target gene transcription (By similarity). Acts as a negative regulator of RANKL-induced osteoclast differentiation, potentially via relocation of TJP2/ZO-2 away from the nucleus, subsequently involved in bone resorption in response to calcium deficiency (By similarity). Mediates the osteoprotective effects of estrogen, potentially via acting downstream of estrogen signaling independently of RANKL signaling pathways (By similarity).
Cellular Location	Cell junction, tight junction {ECO:0000250 UniProtKB:P56857}. Cell membrane {ECO:0000250 UniProtKB:P56857}; Multi-pass membrane protein. Note=Localizes to tight junctions in epithelial cells {ECO:0000250 UniProtKB:P56857} [Isoform A2]: Cell junction, tight junction {ECO:0000250 UniProtKB:P56857}. Lateral cell membrane

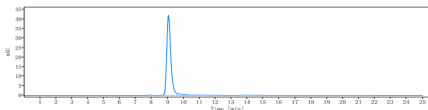
Tissue Location

[Isoform A1]: Expression is restricted to the lung.

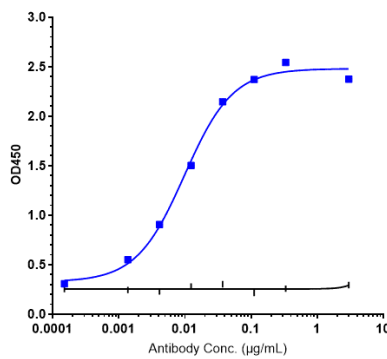
Images



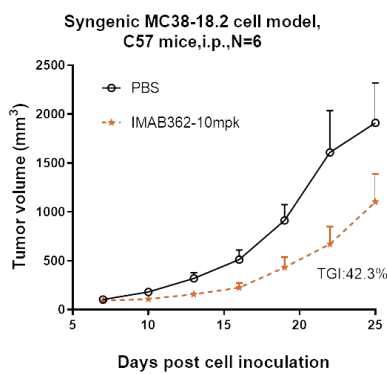
Anti-CLDN18.2 Reference Antibody (zolbetuximab) on SDS-PAGE under reducing (R) condition. The gel was stained with Coomassie Blue. The purity of the protein is greater than 95%



The purity of Anti-CLDN18.2 Reference Antibody (zolbetuximab) is more than 96.05%, determined by SEC-HPLC.



Immobilized human CLDN18.2 VLP at 2 µg/mL can bind Anti-CLDN18.2 Reference Antibody (zolbetuximab), $EC_{50}=0.07951$ µg/mL



Zolbetuximab inhibited the tumor growth of CLDN18.2-MC38 (Mouse colorectal cancer cells) on C57BL/6N mice. The result showed significant anti-tumor effects, with an tumor inhibition rate (TGI) of 42.3% at 10 mpk at D25.

Please note: All products are 'FOR RESEARCH USE ONLY. NOT FOR USE IN DIAGNOSTIC OR THERAPEUTIC PROCEDURES'.