

Anti-SEMA4D / CD100 Reference Antibody (pepinemab)

Recombinant Antibody
Catalog # APR10174

Product Information

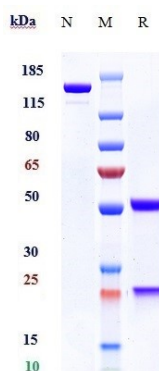
Application	FC, Kinetics, Animal Model
Primary Accession	Q92854
Reactivity	Human, Mouse
Clonality	Monoclonal
Isotype	IgG4SP
Calculated MW	145 KDa

Additional Information

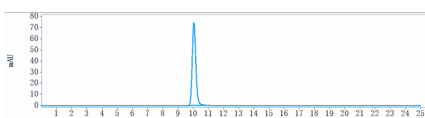
Target/Specificity	SEMA4D / CD100
Endotoxin Conjugation	Unconjugated
Expression system	CHO Cell
Format	Purified monoclonal antibody supplied in PBS, pH6.0, without preservative. This antibody is purified through a protein A column.

Protein Information

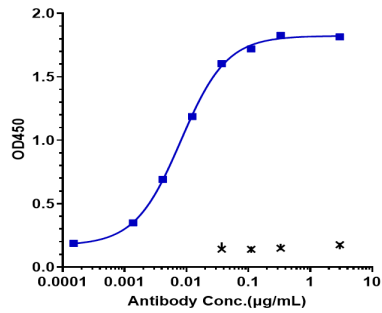
Images



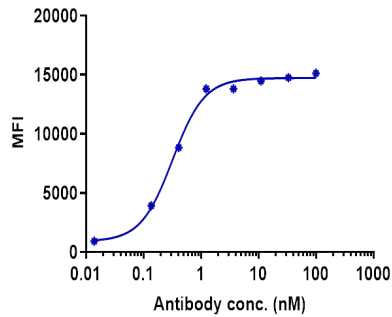
Anti-SEMA4D / CD100 Reference Antibody (pepinemab) on SDS-PAGE under reducing (R) condition. The gel was stained with Coomassie Blue. The purity of the protein is greater than 95%



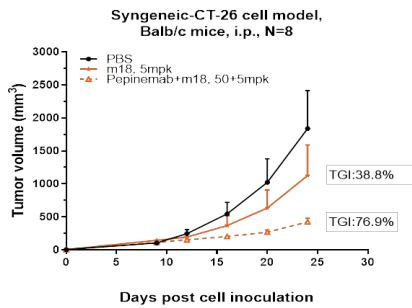
The purity of Anti-SEMA4D / CD100 Reference Antibody (pepinemab) is more than 100%, determined by SEC-HPLC.



Immobilized human SEMA4D/CD100, His Tag at 2 µg/mL can bind Anti-SEMA4D / CD100 Reference Antibody (pepinemab), EC50=0.0081 µg/mL



Human C100 HEK293 cells were stained with Anti-SEMA4D / CD100 Reference Antibody (pepinemab) and negative control protein respectively, washed and then followed by PE and analyzed with FACS, EC231=0.3227 nM



Pepinemab inhibited the tumor growth of CT26 on balb/c mice. The result showed significant anti-tumor effects, with a tumor inhibition rate (TGI) of 76.9% at 50 mpk at D24.

Please note: All products are 'FOR RESEARCH USE ONLY. NOT FOR USE IN DIAGNOSTIC OR THERAPEUTIC PROCEDURES'.