

Anti-BTN1A1 Reference Antibody (CTX-2026)

Recombinant Antibody

Catalog # APR10173

Product Information

Application	FC, Kinetics, Animal Model
Primary Accession	Q13410
Reactivity	Human
Clonality	Monoclonal
Isotype	IgG1
Calculated MW	58960

Additional Information

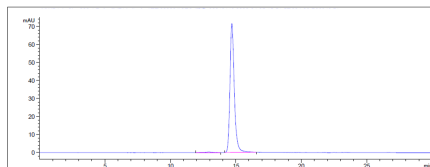
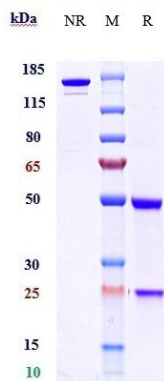
Target/Specificity	BTN1A1
Endotoxin Conjugation	Unconjugated
Expression system	CHO Cell
Format	Purified monoclonal antibody supplied in PBS, pH6.0, without preservative. This antibody is purified through a protein A column.

Protein Information

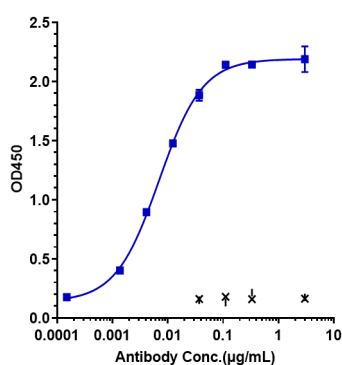
Name	BTN1A1
Synonyms	BTN
Function	May function in the secretion of milk-fat droplets. May act as a specific membrane-associated receptor for the association of cytoplasmic droplets with the apical plasma membrane (By similarity). Inhibits the proliferation of CD4 and CD8 T-cells activated by anti-CD3 antibodies, T-cell metabolism and IL2 and IFNG secretion (By similarity).
Cellular Location	Membrane; Single-pass type I membrane protein. Secreted

Images

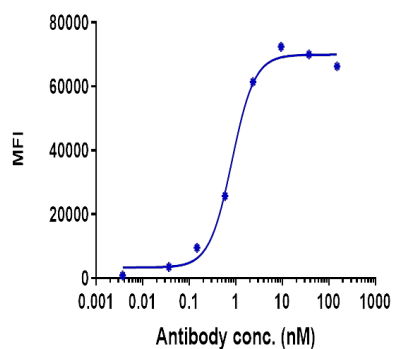
Anti-BTN1A1 Reference Antibody (CTX-2026) on SDS-PAGE under reducing (R) condition. The gel was stained with Coomassie Blue. The purity of the protein is greater than 95%



The purity of Anti-BTN1A1 Reference Antibody (CTX-2026) is more than 98.77% ,determined by SEC-HPLC.



Immobilized human PVRIG His at 2 µg/mL can bind Anti-BTN1A1 Reference Antibody (CTX-2026), EC50=0.002394 µg/mL



Human BTN3 HEK293 cells were stained with Anti-BTN1A1 Reference Antibody (CTX-2026) and negative control protein respectively, washed and then followed by PE and analyzed with FACS, EC230=0.8254 nM

Please note: All products are 'FOR RESEARCH USE ONLY. NOT FOR USE IN DIAGNOSTIC OR THERAPEUTIC PROCEDURES'.