

Anti-IFNa1 Reference Antibody (sifalimumab)

Recombinant Antibody
Catalog # APR10157

Product Information

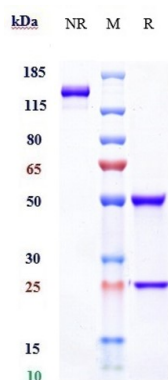
| | |
|--------------------------|----------------------------|
| Application | FC, Kinetics, Animal Model |
| Primary Accession | P01562 |
| Reactivity | Human |
| Clonality | Monoclonal |
| Isotype | IgG1 |
| Calculated MW | 144 KDa |

Additional Information

| | |
|----------------------------------|--|
| Target/Specificity | IFNa1 |
| Endotoxin Conjugation | Unconjugated |
| Expression system | CHO Cell |
| Format | Purified monoclonal antibody supplied in PBS, pH6.0, without preservative. This antibody is purified through a protein A column. |

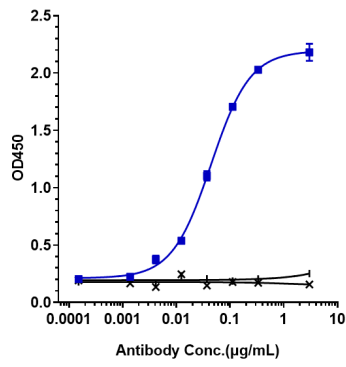
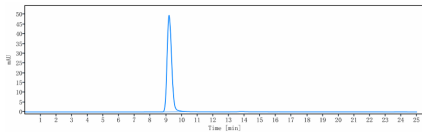
Protein Information

Images



Anti-IFNa1 Reference Antibody (sifalimumab) on SDS-PAGE under reducing (R) condition. The gel was stained with Coomassie Blue. The purity of the protein is greater than 95%

The purity of Anti-IFNa1 Reference Antibody (sifalimumab) is more than 100% ,determined by SEC-HPLC.



Immobilized human IFN α 1, Fc tag at 2 μ g/mL can bind Anti-IFN α 1 Reference Antibody (sifalimumab), EC $_{50}$ =0.04414 μ g/mL

Please note: All products are 'FOR RESEARCH USE ONLY. NOT FOR USE IN DIAGNOSTIC OR THERAPEUTIC PROCEDURES'.