

Anti-EpCAM / TROP1 / CD326 Reference Antibody (citatuzumab)

Recombinant Antibody
Catalog # APR10150

Product Information

Application	FC, Kinetics, Animal Model
Primary Accession	P16422
Reactivity	Human
Clonality	Monoclonal
Isotype	IgG1
Calculated MW	34932

Additional Information

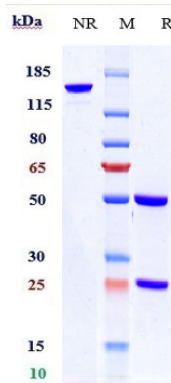
Target/Specificity	EpCAM / TROP1 / CD326
Endotoxin Conjugation	Unconjugated
Expression system	CHO Cell
Format	Purified monoclonal antibody supplied in PBS, pH6.0, without preservative. This antibody is purified through a protein A column.

Protein Information

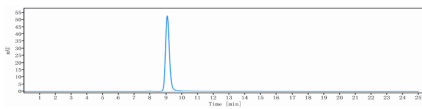
Name	EPCAM
Synonyms	GA733-2, M1S2, M4S1, MIC18, TACSTD1, TRO
Function	May act as a physical homophilic interaction molecule between intestinal epithelial cells (IECs) and intraepithelial lymphocytes (IELs) at the mucosal epithelium for providing immunological barrier as a first line of defense against mucosal infection. Plays a role in embryonic stem cells proliferation and differentiation. Up-regulates the expression of FABP5, MYC and cyclins A and E.
Cellular Location	Lateral cell membrane; Single-pass type I membrane protein. Cell junction, tight junction. Note=Colocalizes with CLDN7 at the lateral cell membrane and tight junction
Tissue Location	Highly and selectively expressed by undifferentiated rather than differentiated embryonic stem cells (ESC) Levels rapidly diminish as soon as ESC's differentiate (at protein levels). Expressed in almost all epithelial cell membranes but not on mesodermal or neural cell membranes. Found on the

surface of adenocarcinoma.

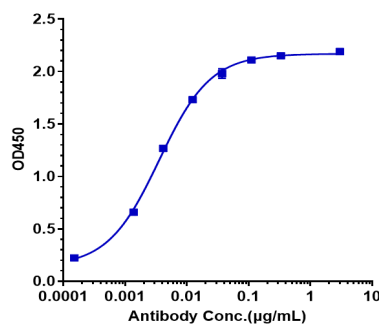
Images



Anti-EpCAM / TROP1 / CD326 Reference Antibody (citatuzumab) on SDS-PAGE under reducing (R) condition. The gel was stained with Coomassie Blue. The purity of the protein is greater than 95%



The purity of Anti-EpCAM / TROP1 / CD326 Reference Antibody (citatuzumab) is more than 97.95%, determined by SEC-HPLC.



Immobilized human EpCAM / TROP1 / CD326, His Tag at 2 µg/mL can bind Anti-EpCAM / TROP1 / CD326 Reference Antibody (citatuzumab), $EC_{50}=0.003551 \mu\text{g/mL}$

Please note: All products are 'FOR RESEARCH USE ONLY. NOT FOR USE IN DIAGNOSTIC OR THERAPEUTIC PROCEDURES'.