

Anti-CLDN6 Reference Antibody (IMAB027)

Recombinant Antibody

Catalog # APR10143

Product Information

Application	FC, Kinetics, Animal Model
Primary Accession	P56747
Reactivity	Human
Clonality	Monoclonal
Isotype	IgG1
Calculated MW	23292

Additional Information

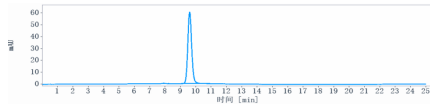
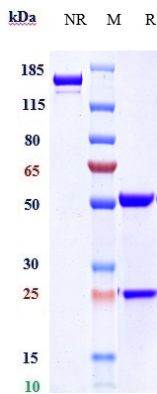
Target/Specificity	CLDN6
Endotoxin Conjugation	Unconjugated
Expression system	CHO Cell
Format	Purified monoclonal antibody supplied in PBS, pH6.0, without preservative. This antibody is purified through a protein A column.

Protein Information

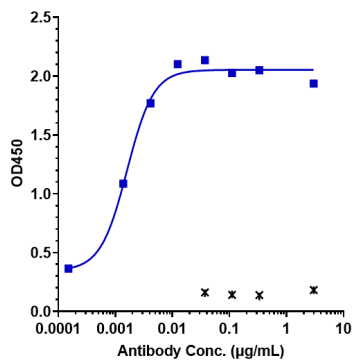
Name	CLDN6
Function	Plays a major role in tight junction-specific obliteration of the intercellular space.
Cellular Location	Cell junction, tight junction {ECO:0000250 UniProtKB:Q9Z262}. Cell membrane; Multi-pass membrane protein
Tissue Location	Expressed in the liver, in peripheral blood mononuclear cells and hepatocarcinoma cell lines

Images

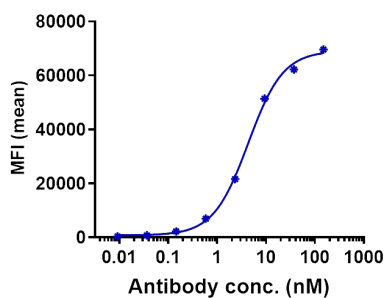
Anti-CLDN6 Reference Antibody (IMAB027) on SDS-PAGE under reducing (R) condition. The gel was stained with Coomassie Blue. The purity of the protein is greater than 95%



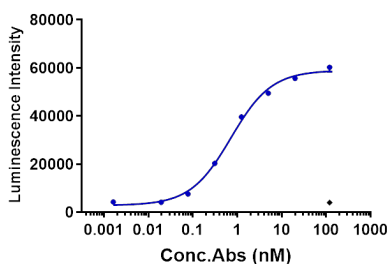
The purity of Anti-CLDN6 Reference Antibody (IMAB027) is more than 98.41% ,determined by SEC-HPLC.



Immobilized human CLDN6 VLP at 8 µg/mL can bind Anti-CLDN6 Reference Antibody (IMAB027), $EC_{50}=0.001599$ µg/mL

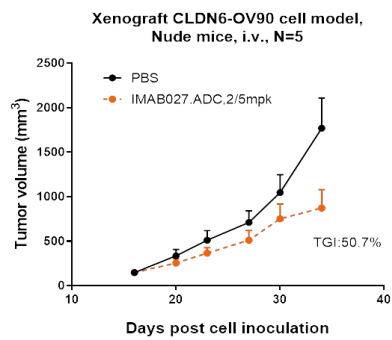
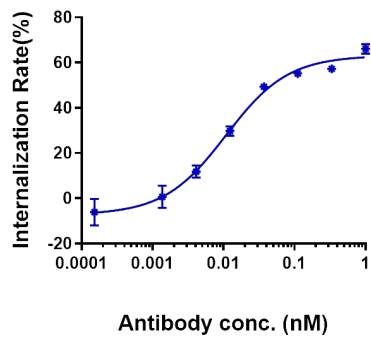


Human CLDN6 CHO cells were stained with Anti-CLDN6 Reference Antibody (IMAB027) and negative control protein respectively, washed and then followed by PE and analyzed with FACS, $EC_{199}=4.342$ nM



Anti-CLDN6 Reference Antibody (IMAB027)-induced ADCC activity was evaluated using Human CD16a (158V) (Luc) Jurkat Reporter Cell. The max induction fold was approximately 14.16

Anti-CLDN6 Reference Antibody (IMAB027) by huCLDN6-HEK293 increased with the increase of antibody concentration, and the Internalization Rate (%) reached 60% at antibody concentration of 1 nM.



IMAB027 inhibited the tumor growth of OV90 on Balb/c nude mice. The result showed significant anti-tumor effects, with an tumor inhibition rate (TGI) of 50.7% at 5 mpk at D34.

Please note: All products are 'FOR RESEARCH USE ONLY. NOT FOR USE IN DIAGNOSTIC OR THERAPEUTIC PROCEDURES'.