

Anti-GPRC5D Reference Antibody (talquetamab)

Recombinant Antibody
Catalog # APR10140

Product Information

Application	FC, Kinetics, Animal Model
Primary Accession	Q9NZD1
Reactivity	Human, Mouse
Clonality	Monoclonal
Isotype	IgG4
Calculated MW	38791

Additional Information

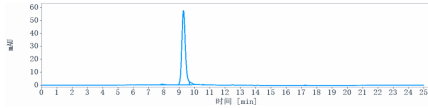
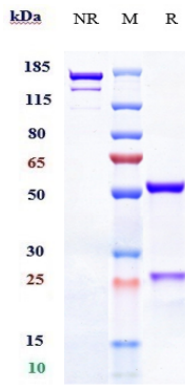
Target/Specificity	GPRC5D
Endotoxin Conjugation	Unconjugated
Expression system	CHO Cell
Format	Purified monoclonal antibody supplied in PBS, pH6.0, without preservative. This antibody is purified through a protein A column.

Protein Information

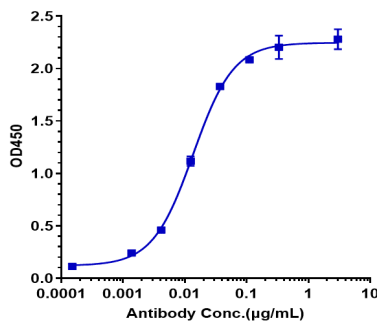
Name	GPRC5D
Function	G-protein coupled receptor involved in hair keratin expression and likely plays a role in the development of hair and nails.
Cellular Location	Cell membrane; Multi-pass membrane protein
Tissue Location	Widely expressed in the peripheral system. Expression pattern is high in pancreas, medium in kidney, small intestine, spleen and testis, low in lung, colon, leukocyte, prostate and thymus and not detectable in brain, heart, liver, placenta, skeletal muscle and ovary.

Images

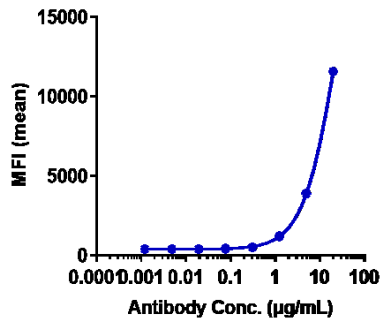
Anti-GPRC5D Reference Antibody (talquetamab) on SDS-PAGE under reducing (R) condition. The gel was stained with Coomassie Blue. The purity of the protein is greater than 95%



The purity of Anti-GPRC5D Reference Antibody (talquetamab) is more than 95.4%, determined by SEC-HPLC.



Immobilized human CD3E/CD3 epsilon Protein, his Tag at 2 µg/mL can bind Anti-GPRC5D Reference Antibody (talquetamab), $EC_{50}=0.01357 \mu\text{g/mL}$



Human GPRC5D HEK293 cells were stained with Anti-GPRC5D Reference Antibody (talquetamab) and negative control protein respectively, washed and then followed by PE and analyzed with FACS, $EC_{196}=25.06 \mu\text{g/mL}$

Please note: All products are 'FOR RESEARCH USE ONLY. NOT FOR USE IN DIAGNOSTIC OR THERAPEUTIC PROCEDURES'.