

Anti-CD3e Reference Antibody (teplizumab)

Recombinant Antibody

Catalog # APR10139

Product Information

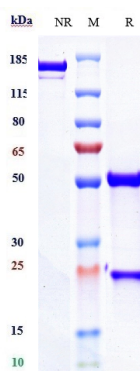
Application	FC, Kinetics, Animal Model
Primary Accession	P07766
Reactivity	Human
Clonality	Monoclonal
Isotype	IgG1
Calculated MW	150 KDa

Additional Information

Target/Specificity	CD3e
Endotoxin	
Conjugation	Unconjugated
Expression system	CHO Cell
Format	Purified monoclonal antibody supplied in PBS, pH6.0, without preservative. This antibody is purified through a protein A column.

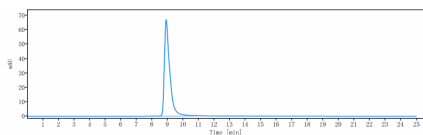
Protein Information

Images



Anti-CD3e Reference Antibody (teplizumab) on SDS-PAGE under reducing (R) condition. The gel was stained with Coomassie Blue. The purity of the protein is greater than 95%

The purity of Anti-CD3e Reference Antibody (teplizumab) is more than 100% ,determined by SEC-HPLC.



Please note: All products are 'FOR RESEARCH USE ONLY. NOT FOR USE IN DIAGNOSTIC OR THERAPEUTIC PROCEDURES'.