

# Anti-GUCY2C Reference Antibody (indusatumab)

Recombinant Antibody

Catalog # APR10120

## Product Information

---

<b>Application</b>	FC, Kinetics, Animal Model
<b>Primary Accession</b>	<a href="#">P25092</a>
<b>Reactivity</b>	Human, Rat, Pig
<b>Clonality</b>	Monoclonal
<b>Isotype</b>	IgG1
<b>Calculated MW</b>	123403

## Additional Information

---

<b>Target/Specificity</b>	GUCY2C
<b>Endotoxin Conjugation</b>	Unconjugated
<b>Expression system</b>	CHO Cell
<b>Format</b>	Purified monoclonal antibody supplied in PBS, pH6.0, without preservative. This antibody is purified through a protein A column.

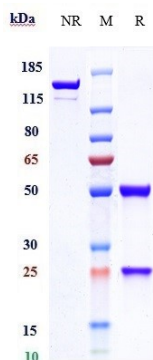
## Protein Information

---

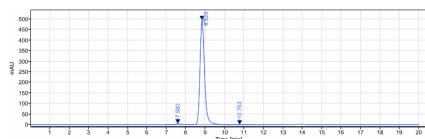
<b>Name</b>	GUCY2C {ECO:0000303   PubMed:22521417, ECO:0000312   HGNC:HGNC:4688}
<b>Function</b>	Guanylyl cyclase that catalyzes synthesis of cyclic GMP (cGMP) from GTP (PubMed: <a href="#">11950846</a> , PubMed: <a href="#">1718270</a> , PubMed: <a href="#">22436048</a> , PubMed: <a href="#">22521417</a> , PubMed: <a href="#">23269669</a> ). Receptor for the E.coli heat-stable enterotoxin; E.coli enterotoxin markedly stimulates the accumulation of cGMP in mammalian cells expressing GUCY2C (PubMed: <a href="#">1680854</a> , PubMed: <a href="#">1718270</a> ). Also activated by the endogenous peptides guanylin and uroguanylin (PubMed: <a href="#">8381596</a> ).
<b>Cellular Location</b>	Cell membrane; Single-pass type I membrane protein Endoplasmic reticulum membrane; Single- pass type I membrane protein. Note=The 145 kDa plasma membrane form of GUCY2C contains sialic acid and galactose residues, while a differentially glycosylated 130 Kda form is a high mannose form that is resident in the endoplasmic reticulum and may serve as the precursor for the cell surface form

## Images

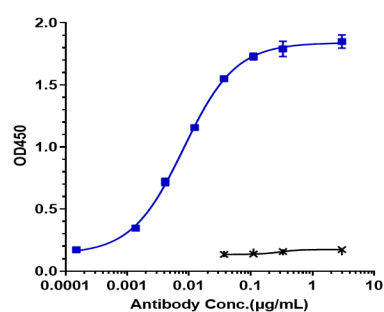
---



Anti-GUCY2C Reference Antibody (indusatumab) on SDS-PAGE under reducing (R) condition. The gel was stained with Coomassie Blue. The purity of the protein is greater than 95%



The purity of Anti-GUCY2C Reference Antibody (indusatumab) is more than 98.5%, determined by SEC-HPLC.



Immobilized human GUCY2C His at 2  $\mu\text{g/mL}$  can bind Anti-GUCY2C Reference Antibody (indusatumab),  $\text{EC}_{50}=0.00818 \mu\text{g/mL}$

Please note: All products are 'FOR RESEARCH USE ONLY. NOT FOR USE IN DIAGNOSTIC OR THERAPEUTIC PROCEDURES'.