

Anti-FOLR1 / FRA Reference Antibody (farletuzumab-MMAE)

Recombinant Antibody
Catalog # APR10115

Product Information

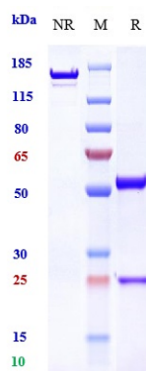
Application	FC, Kinetics, Animal Model
Primary Accession	P15328
Reactivity	Human
Clonality	Monoclonal
Isotype	IgG1
Calculated MW	145 kDa

Additional Information

Target/Specificity	FOLR1 / FRA
Endotoxin Conjugation	MMAE
Expression system	CHO Cell
Format	Purified monoclonal antibody supplied in PBS, pH6.0, without preservative. This antibody is purified through a protein A column.

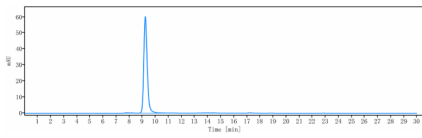
Protein Information

Images

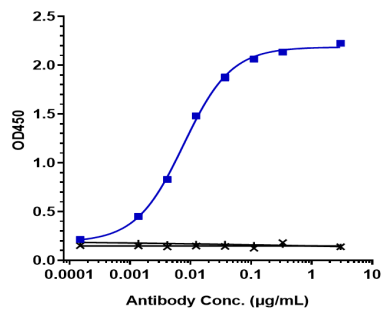


Anti-FOLR1 / FRA Reference Antibody
(farletuzumab-MMAE) on SDS-PAGE under reducing (R)
condition. The gel was stained with Coomassie Blue. The
purity of the protein is greater than 90%

The purity of Anti-FOLR1 / FRA Reference Antibody



(farletuzumab-MMAE) is more than 95% ,determined by SEC-HPLC.



Immobilized human FR α His at 2 μ g/mL can bind Anti-FOLR1 / FRA Reference Antibody (farletuzumab-MMAE), EC₅₀=0.007651 μ g/mL

Please note: All products are 'FOR RESEARCH USE ONLY. NOT FOR USE IN DIAGNOSTIC OR THERAPEUTIC PROCEDURES'.