

# Anti-DLL3 Reference Antibody (rovalpituzumab)

Recombinant Antibody

Catalog # APR10108

## Product Information

---

<b>Application</b>	FC, Kinetics, Animal Model
<b>Primary Accession</b>	<a href="#">Q9NYJ7</a>
<b>Reactivity</b>	Human
<b>Clonality</b>	Monoclonal
<b>Isotype</b>	IgG1
<b>Calculated MW</b>	64618

## Additional Information

---

<b>Target/Specificity</b>	DLL3
<b>Endotoxin</b>	
<b>Conjugation</b>	Unconjugated
<b>Expression system</b>	CHO Cell
<b>Format</b>	Purified monoclonal antibody supplied in PBS, pH6.0, without preservative. This antibody is purified through a protein A column.

## Protein Information

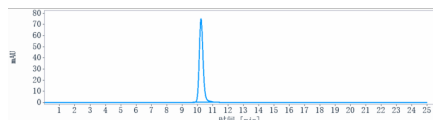
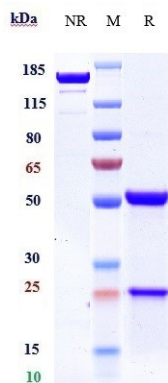
---

<b>Name</b>	DLL3
<b>Function</b>	Inhibits primary neurogenesis. May be required to divert neurons along a specific differentiation pathway. Plays a role in the formation of somite boundaries during segmentation of the paraxial mesoderm (By similarity).
<b>Cellular Location</b>	Membrane; Single-pass type I membrane protein

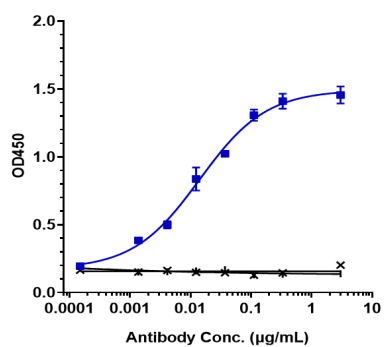
## Images

---

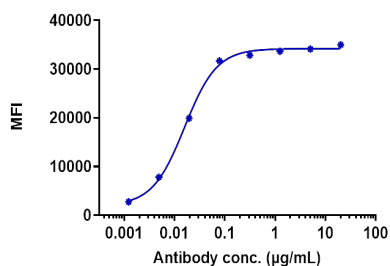
Anti-DLL3 Reference Antibody (rovalpituzumab) on SDS-PAGE under reducing (R) condition. The gel was stained with Coomassie Blue. The purity of the protein is greater than 95%



The purity of Anti-DLL3 Reference Antibody (rovalpituzumab) is more than 98.44%, determined by SEC-HPLC.



Immobilized human DLL3 His at 2 µg/mL can bind Anti-DLL3 Reference Antibody (rovalpituzumab),  $EC_{50}=0.01407$  µg/mL



Human DLL3 HEK293 cells were stained with Anti-DLL3 Reference Antibody (rovalpituzumab) and negative control protein respectively, washed and then followed by PE and analyzed with FACS,  $EC_{50}=0.01586$  µg/mL

Please note: All products are 'FOR RESEARCH USE ONLY. NOT FOR USE IN DIAGNOSTIC OR THERAPEUTIC PROCEDURES'.