

Anti-CDCP1 / CD318 Reference Antibody (38 E11)

Recombinant Antibody

Catalog # APR10099

Product Information

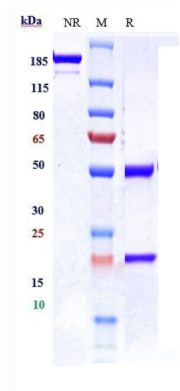
Application	FC, Kinetics, Animal Model
Primary Accession	Q9H5V8
Reactivity	Human
Clonality	Monoclonal
Isotype	IgG1
Calculated MW	92932

Additional Information

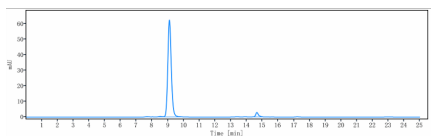
Target/Specificity	CDCP1 / CD318
Endotoxin	
Conjugation	Unconjugated
Expression system	CHO Cell
Format	Purified monoclonal antibody supplied in PBS, pH6.0, without preservative. This antibody is purified through a protein A column.

Protein Information

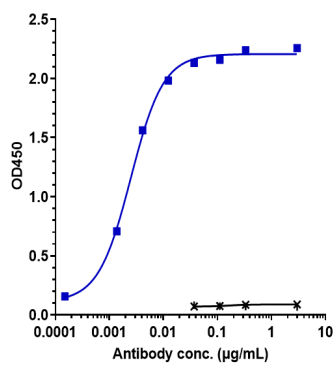
Name	CDCP1
Synonyms	TRASK
Function	May be involved in cell adhesion and cell matrix association. May play a role in the regulation of anchorage versus migration or proliferation versus differentiation via its phosphorylation. May be a novel marker for leukemia diagnosis and for immature hematopoietic stem cell subsets. Belongs to the tetraspanin web involved in tumor progression and metastasis.
Cellular Location	[Isoform 1]: Cell membrane; Single- pass membrane protein. Note=Shedding may also lead to a soluble peptide
Tissue Location	Highly expressed in mitotic cells with low expression during interphase. Detected at highest levels in skeletal muscle and colon with lower levels in kidney, small intestine, placenta and lung. Up-regulated in a number of human tumor cell lines, as well as in colorectal cancer, breast carcinoma and lung cancer. Also expressed in cells with phenotypes reminiscent of mesenchymal stem cells and neural stem cells.



Anti-CDCP1 / CD318 Reference Antibody (38 E11) on SDS-PAGE under reducing (R) condition. The gel was stained with Coomassie Blue. The purity of the protein is greater than 95%



The purity of Anti-CDCP1 / CD318 Reference Antibody (38 E11) is more than 95.48% ,determined by SEC-HPLC.



Immobilized human CDCP1 His at 2 µg/mL can bind Anti-CDCP1 / CD318 Reference Antibody (38 E11),EC50=0.002496 µg/mL

Image not found : 202311/AP90098-4.jpg

Human CDCP1 HEK293 cells were stained with Anti-CDCP1 / CD318 Reference Antibody (38 E11) and negative control protein respectively, washed and then followed by PE and analyzed with FACS, EC152=0.385 µg/mL

Please note: All products are 'FOR RESEARCH USE ONLY. NOT FOR USE IN DIAGNOSTIC OR THERAPEUTIC PROCEDURES'.