

Anti-Complement C5 Reference Antibody (ravulizumab)

Recombinant Antibody

Catalog # APR10082

Product Information

Application	FC, Kinetics, Animal Model
Primary Accession	P01031
Reactivity	Human, Mouse
Clonality	Monoclonal
Isotype	IgG2SA
Calculated MW	188305

Additional Information

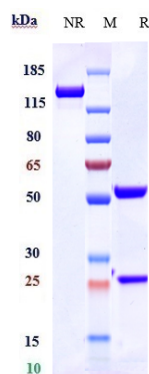
Target/Specificity	Complement C5
Endotoxin	
Conjugation	Unconjugated
Expression system	CHO Cell
Format	Purified monoclonal antibody supplied in PBS, pH6.0, without preservative. This antibody is purified through a protein A column.

Protein Information

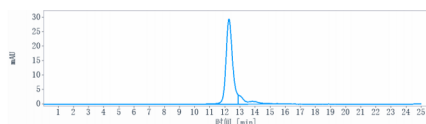
Name	C5 {ECO:0000303 PubMed:1984448, ECO:0000312 HGNC:HGNC:1331}
Function	Precursor of the C5a anaphylatoxin and complement C5b components of the complement pathways, which consist in a cascade of proteins that leads to phagocytosis and breakdown of pathogens and signaling that strengthens the adaptive immune system (PubMed: 12878586 , PubMed: 18204047 , PubMed: 30643019 , PubMed: 6554279). Activated downstream of classical, alternative, lectin and GZMK complement pathways (PubMed: 12878586 , PubMed: 18204047 , PubMed: 30643019 , PubMed: 39914456 , PubMed: 39814882 , PubMed: 6554279).
Cellular Location	Secreted. [C5a anaphylatoxin]: Secreted

Images

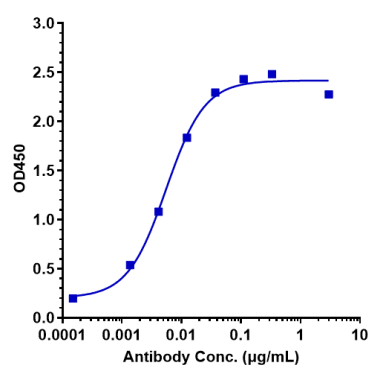
Anti-Complement C5 Reference Antibody (ravulizumab) on SDS-PAGE under reducing (R) condition. The gel was stained with Coomassie Blue. The purity of the protein is



greater than 95%



The purity of Anti-Complement C5 Reference Antibody (ravulizumab) is more than 98.96% ,determined by SEC-HPLC.



Immobilized human C5 His at 2 µg/mL can bind Anti-Complement C5 Reference Antibody (ravulizumab), $EC_{50}=0.00552$ µg/mL

Please note: All products are 'FOR RESEARCH USE ONLY. NOT FOR USE IN DIAGNOSTIC OR THERAPEUTIC PROCEDURES'.