

Anti-Complement C5aR1 Reference Antibody (avdoralimab)

Recombinant Antibody
Catalog # APR10081

Product Information

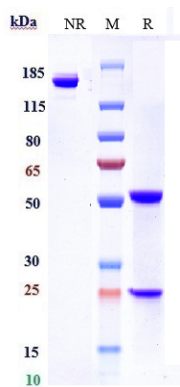
Application	FC, Kinetics, Animal Model
Primary Accession	P21730
Reactivity	Human
Clonality	Monoclonal
Isotype	IgG1
Calculated MW	39336

Additional Information

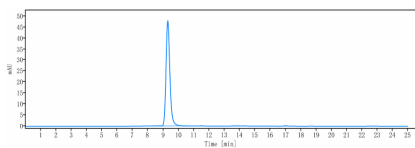
Target/Specificity	Complement C5aR1
Endotoxin Conjugation	Unconjugated
Expression system	CHO Cell
Format	Purified monoclonal antibody supplied in PBS, pH6.0, without preservative. This antibody is purified through a protein A column.

Protein Information

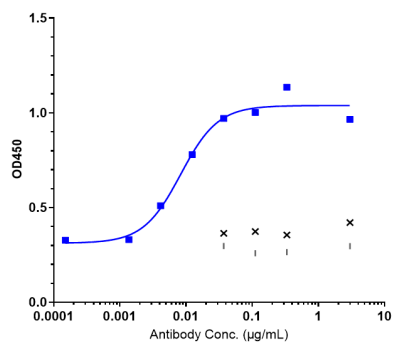
Name	C5AR1
Synonyms	C5AR, C5R1
Function	Receptor for the chemotactic and inflammatory peptide anaphylatoxin C5a (PubMed: 10636859 , PubMed: 15153520 , PubMed: 1847994 , PubMed: 29300009 , PubMed: 7622471 , PubMed: 8182049 , PubMed: 9553099). The ligand interacts with at least two sites on the receptor: a high-affinity site on the extracellular N-terminus, and a second site in the transmembrane region which activates downstream signaling events (PubMed: 7622471 , PubMed: 8182049 , PubMed: 9553099). Receptor activation stimulates chemotaxis, granule enzyme release, intracellular calcium release and superoxide anion production (PubMed: 10636859 , PubMed: 15153520).
Cellular Location	Cell membrane; Multi-pass membrane protein. Cytoplasmic vesicle. Note=Phosphorylated C5aR colocalizes with ARRB1 and ARRB2 in cytoplasmic vesicles



Anti-Complement C5aR1 Reference Antibody (avdoralimab) on SDS-PAGE under reducing (R) condition. The gel was stained with Coomassie Blue. The purity of the protein is greater than 95%



The purity of Anti-Complement C5aR1 Reference Antibody (avdoralimab) is more than 99.63%, determined by SEC-HPLC.



Immobilized human C5aR1 VLP at 16 µg/mL can bind Anti-Complement C5aR1 Reference Antibody (avdoralimab), $EC_{50}=0.008278$ µg/mL

Please note: All products are 'FOR RESEARCH USE ONLY. NOT FOR USE IN DIAGNOSTIC OR THERAPEUTIC PROCEDURES'.