

# Anti-C1s Reference Antibody (sutimlimab)

Recombinant Antibody

Catalog # APR10080

## Product Information

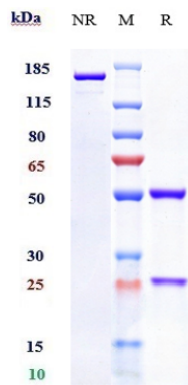
Application	FC, Kinetics, Animal Model
Primary Accession	<a href="#">P09871</a>
Reactivity	Human
Clonality	Monoclonal
Isotype	IgG4SP
Calculated MW	76684

## Additional Information

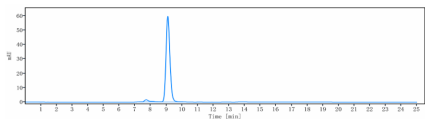
Target/Specificity	C1s
Endotoxin Conjugation	Unconjugated
Expression system	CHO Cell
Format	Purified monoclonal antibody supplied in PBS, pH6.0, without preservative. This antibody is purified through a protein A column.

## Protein Information

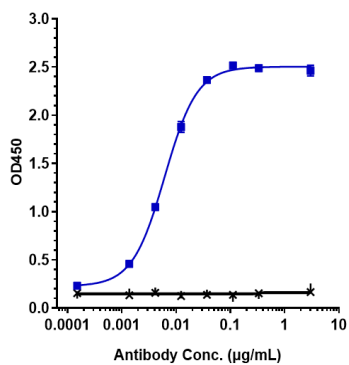
Name	C1S {ECO:0000303   PubMed:3500856, ECO:0000312   HGNC:HGNC:1247}
Function	<p>Component of the complement C1 complex, a multiprotein complex that initiates the classical pathway of the complement system, a cascade of proteins that leads to phagocytosis and breakdown of pathogens and signaling that strengthens the adaptive immune system (PubMed:<a href="#">11445589</a>, PubMed:<a href="#">16169853</a>, PubMed:<a href="#">417728</a>, PubMed:<a href="#">467643</a>, PubMed:<a href="#">6271784</a>, PubMed:<a href="#">6282646</a>, PubMed:<a href="#">6319179</a>, PubMed:<a href="#">70787</a>, PubMed:<a href="#">9422791</a>). C1S is activated following association of the C1 complex with immunoglobulins (IgG or IgM) complexed with antigens to form antigen-antibody complexes on the surface of pathogens (PubMed:<a href="#">34155115</a>). C1S is cleaved and activated by C1R to generate C1s subcomponent heavy and light chains (PubMed:<a href="#">11445589</a>, PubMed:<a href="#">6271784</a>). C1s subcomponent light chain then cleaves and activates C2 and C4, the next components of the classical complement pathway (PubMed:<a href="#">16169853</a>, PubMed:<a href="#">467643</a>, PubMed:<a href="#">6282646</a>, PubMed:<a href="#">6319179</a>, PubMed:<a href="#">6906228</a>, PubMed:<a href="#">70787</a>, PubMed:<a href="#">9422791</a>).</p>
Cellular Location	Secreted. Cell surface. Note=Recruited to the surface of pathogens by the C1Q subcomplex.



Anti-C1s Reference Antibody (sutimlimab) on SDS-PAGE under reducing (R) condition. The gel was stained with Coomassie Blue. The purity of the protein is greater than 95%



The purity of Anti-C1s Reference Antibody (sutimlimab) is more than 96.87% ,determined by SEC-HPLC.



Immobilized human C1S His at 2 µg/mL can bind Anti-C1s Reference Antibody (sutimlimab),EC50=0.006163 µg/mL

Please note: All products are 'FOR RESEARCH USE ONLY. NOT FOR USE IN DIAGNOSTIC OR THERAPEUTIC PROCEDURES'.