

# Anti-FcRn (FCGRT & B2M) Reference Antibody (batoclimab)

Recombinant Antibody  
Catalog # APR10077

## Product Information

Application	FC, Kinetics, Animal Model
Primary Accession	<a href="#">P55899</a>
Reactivity	Human
Clonality	Monoclonal
Isotype	IgG1
Calculated MW	39743

## Additional Information

Target/Specificity	FcRn (FCGRT & B2M)
Endotoxin Conjugation	Unconjugated
Expression system	CHO Cell
Format	Purified monoclonal antibody supplied in PBS, pH6.0, without preservative. This antibody is purified through a protein A column.

## Protein Information

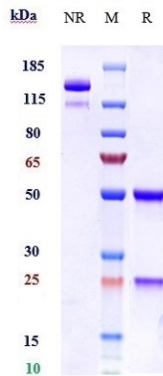
Name	FCGRT
Synonyms	FCRN
Function	<p>Cell surface receptor that transfers passive humoral immunity from the mother to the newborn. Binds to the Fc region of monomeric immunoglobulin gamma and mediates its selective uptake from milk (PubMed:<a href="#">10933786</a>, PubMed:<a href="#">7964511</a>). IgG in the milk is bound at the apical surface of the intestinal epithelium. The resultant FcRn-IgG complexes are transcytosed across the intestinal epithelium and IgG is released from FcRn into blood or tissue fluids. Throughout life, contributes to effective humoral immunity by recycling IgG and extending its half-life in the circulation. Mechanistically, monomeric IgG binding to FcRn in acidic endosomes of endothelial and hematopoietic cells recycles IgG to the cell surface where it is released into the circulation (PubMed:<a href="#">10998088</a>). In addition of IgG, regulates homeostasis of the other most abundant circulating protein albumin/ALB (PubMed:<a href="#">24469444</a>, PubMed:<a href="#">28330995</a>).</p>
Cellular Location	Cell membrane {ECO:0000250   UniProtKB:P13599}; Single-pass type I

membrane protein. Endosome membrane

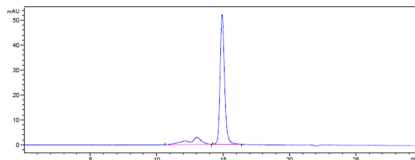
## Tissue Location

Expressed in full-term placenta, heart, lung, liver, muscle, kidney, pancreas, and both fetal and adult small intestine.

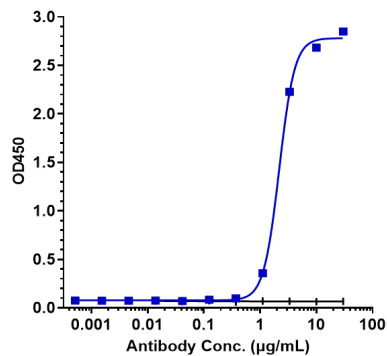
## Images



Anti-FcRn (FCGRT & B2M) Reference Antibody (batoclimab) on SDS-PAGE under reducing (R) condition. The gel was stained with Coomassie Blue. The purity of the protein is greater than 95%



The purity of Anti-FcRn (FCGRT & B2M) Reference Antibody (batoclimab) is more than 95%, determined by SEC-HPLC.



Immobilized human b2M L FcRn at 2 µg/mL can bind Anti-FcRn (FCGRT & B2M) Reference Antibody (batoclimab),  $EC_{50}=2.18 \mu\text{g/mL}$

Please note: All products are 'FOR RESEARCH USE ONLY. NOT FOR USE IN DIAGNOSTIC OR THERAPEUTIC PROCEDURES'.