

# Anti-CTLA-4 / CD152 Reference Antibody (Antitope patent anti-CTLA4)

Recombinant Antibody  
Catalog # APR10018

## Product Information

---

<b>Application</b>	FC, Kinetics, Animal Model
<b>Primary Accession</b>	<a href="#">P16410</a>
<b>Reactivity</b>	Human
<b>Clonality</b>	Monoclonal
<b>Isotype</b>	IgG1
<b>Calculated MW</b>	24656

## Additional Information

---

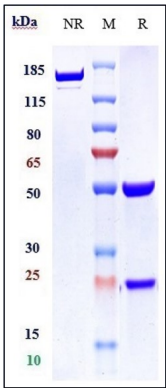
<b>Target/Specificity</b>	CTLA-4 / CD152
<b>Endotoxin Conjugation</b>	Unconjugated
<b>Expression system</b>	CHO Cell
<b>Format</b>	Purified monoclonal antibody supplied in PBS, pH6.0, without preservative. This antibody is purified through a protein A column.

## Protein Information

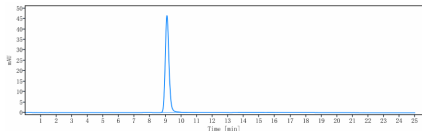
---

<b>Name</b>	CTLA4
<b>Synonyms</b>	CD152
<b>Function</b>	Inhibitory receptor acting as a major negative regulator of T-cell responses (PubMed: <a href="#">11279501</a> , PubMed: <a href="#">11279502</a> , PubMed: <a href="#">16551244</a> , PubMed: <a href="#">1714933</a> , PubMed: <a href="#">18641304</a> , PubMed: <a href="#">28484017</a> ). Acts as a decoy receptor: the affinity of CTLA4 for its natural B7 family ligands, CD80 and CD86, is considerably stronger than the affinity of their cognate stimulatory coreceptor CD28 (PubMed: <a href="#">11279501</a> , PubMed: <a href="#">11279502</a> , PubMed: <a href="#">16551244</a> , PubMed: <a href="#">1714933</a> , PubMed: <a href="#">28484017</a> ).
<b>Cellular Location</b>	Cell membrane; Single-pass type I membrane protein. Note=Exists primarily an intracellular antigen whose surface expression is tightly regulated by restricted trafficking to the cell surface and rapid internalization
<b>Tissue Location</b>	Widely expressed with highest levels in lymphoid tissues. Detected in activated T-cells where expression levels are 30- to 50-fold less than CD28, the stimulatory coreceptor, on the cell surface following activation.

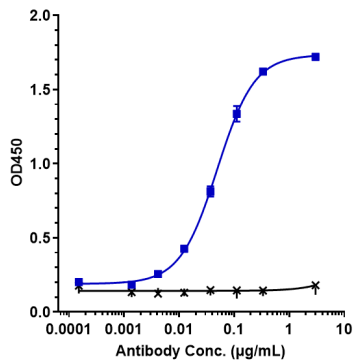
Images



Anti-CTLA-4 / CD152 Reference Antibody (Antitope patent anti-CTLA4) on SDS-PAGE under reducing (R) condition. The gel was stained with Coomassie Blue. The purity of the protein is greater than 90%



The purity of Anti-CTLA-4 / CD152 Reference Antibody (Antitope patent anti-CTLA4) is more than 95% ,determined by SEC-HPLC.



Immobilized human CTLA 4 His at 2 µg/mL can bind Anti-CTLA-4 / CD152 Reference Antibody (Antitope patent anti-CTLA4),EC50=0.04907 µg/mL.

Please note: All products are 'FOR RESEARCH USE ONLY. NOT FOR USE IN DIAGNOSTIC OR THERAPEUTIC PROCEDURES'.