

# Anti-CLDN6 Reference Antibody (AB3-7)

Recombinant Antibody  
Catalog # APR10014

## Product Information

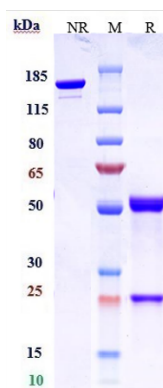
<b>Application</b>	FC, Kinetics, Animal Model
<b>Primary Accession</b>	<a href="#">P56747</a>
<b>Reactivity</b>	Human
<b>Clonality</b>	Monoclonal
<b>Isotype</b>	IgG1
<b>Calculated MW</b>	78 kDa

## Additional Information

<b>Target/Specificity</b>	CLDN6
<b>Endotoxin Conjugation</b>	Unconjugated
<b>Expression system</b>	CHO Cell
<b>Format</b>	Purified monoclonal antibody supplied in PBS, pH6.0, without preservative. This antibody is purified through a protein A column.

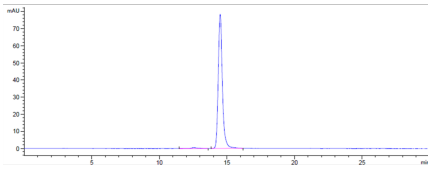
## Protein Information

## Images

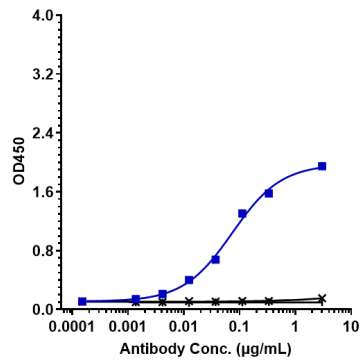


Anti-CLDN6 Reference Antibody (AB3-7) on SDS-PAGE under reducing (R) condition. The gel was stained with Coomassie Blue. The purity of the protein is greater than 95%

The purity of Anti-CLDN6 Reference Antibody (AB3-7) is more than 98.56% ,determined by SEC-HPLC.



Immobilized human CLDN6 VLP Protein at 2  $\mu\text{g}/\text{mL}$  can bind Anti-CLDN6 Reference Antibody (AB3-7),  $\text{EC}_{50}=0.07358 \mu\text{g}/\text{mL}$ .



Please note: All products are 'FOR RESEARCH USE ONLY. NOT FOR USE IN DIAGNOSTIC OR THERAPEUTIC PROCEDURES'.