

Anti-CALCRL / CGRPR Reference Antibody (erenumab)

Recombinant Antibody
Catalog # APR10013

Product Information

Application	FC, Kinetics, Animal Model
Primary Accession	Q16602
Reactivity	Human
Clonality	Monoclonal
Isotype	IgG2SA
Calculated MW	52979

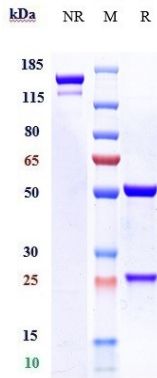
Additional Information

Target/Specificity	CALCRL / CGRPR
Endotoxin Conjugation	Unconjugated
Expression system	CHO Cell
Format	Purified monoclonal antibody supplied in PBS, pH6.0, without preservative. This antibody is purified through a protein A column.

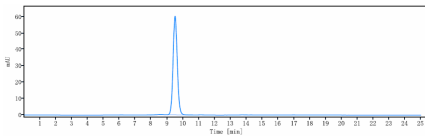
Protein Information

Name	CALCRL (HGNC:16709)
Synonyms	CGRPR
Function	G protein-coupled receptor which specificity is determined by its interaction with receptor-activity-modifying proteins (RAMPs) (PubMed: 32296767 , PubMed: 33602864 , PubMed: 8626685). Together with RAMP1, form the receptor complex for calcitonin-gene-related peptides CALCA/CGRP1 and CALCB/CGRP2 (PubMed: 33602864). Together with RAMP2 or RAMP3, function as receptor complexes for adrenomedullin (ADM and ADM2) (PubMed: 32296767 , PubMed: 9620797). Ligand binding causes a conformation change that triggers signaling via guanine nucleotide-binding proteins (G proteins) and modulates the activity of downstream effectors. Activates cAMP-dependent pathway (PubMed: 32296767 , PubMed: 8626685).
Cellular Location	Cell membrane; Multi-pass membrane protein
Tissue Location	Predominantly expressed in the lung and heart.

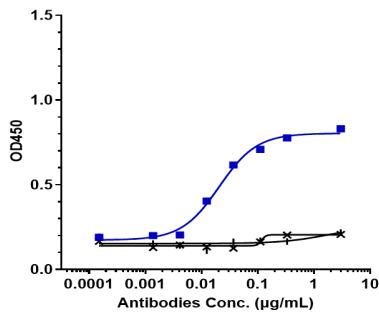
Images



Anti-CALCRL / CGRPR Reference Antibody (erenumab) on SDS-PAGE under reducing (R) condition. The gel was stained with Coomassie Blue. The purity of the protein is greater than 95%



The purity of Anti-CALCRL / CGRPR Reference Antibody (erenumab) is more than 99.43% ,determined by SEC-HPLC.



Immobilized human CGRPR VLP Protein at 16 µg/mL can bind Anti-CALCRL / CGRPR Reference Antibody (erenumab), EC50=0.0206 µg/mL.

Please note: All products are 'FOR RESEARCH USE ONLY. NOT FOR USE IN DIAGNOSTIC OR THERAPEUTIC PROCEDURES'.