

Anti-CD20 Reference Antibody (obinutuzumab)

Recombinant Antibody
Catalog # APR10012

Product Information

Application	FC, Kinetics, Animal Model
Primary Accession	P11836
Reactivity	Human
Clonality	Monoclonal
Isotype	IgG1
Calculated MW	33077

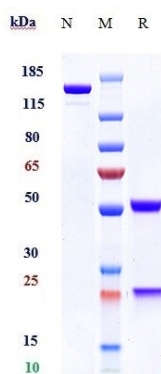
Additional Information

Target/Specificity	CD20
Endotoxin Conjugation	Unconjugated
Expression system	CHO Cell
Format	Purified monoclonal antibody supplied in PBS, pH6.0, without preservative. This antibody is purified through a protein A column.

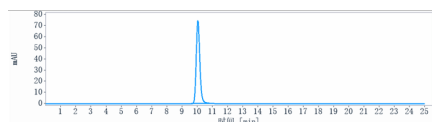
Protein Information

Name	MS4A1
Synonyms	CD20
Function	B-lymphocyte-specific membrane protein that plays a role in the regulation of cellular calcium influx necessary for the development, differentiation, and activation of B-lymphocytes (PubMed: 12920111 , PubMed: 3925015 , PubMed: 7684739). Functions as a store-operated calcium (SOC) channel component promoting calcium influx after activation by the B-cell receptor/BCR (PubMed: 12920111 , PubMed: 18474602 , PubMed: 7684739).
Cellular Location	Cell membrane; Multi-pass membrane protein. Cell membrane; Lipid-anchor. Note=Constitutively associated with membrane rafts.
Tissue Location	Expressed on B-cells.

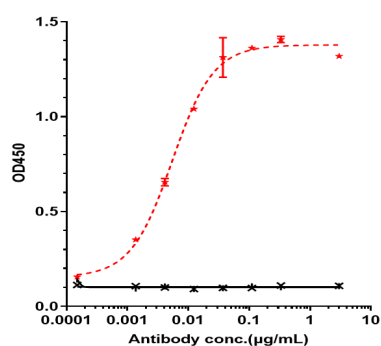
Images



Anti-CD20 Reference Antibody (obinutuzumab) on SDS-PAGE under reducing (R) condition. The gel was stained with Coomassie Blue. The purity of the protein is greater than 90%



The purity of Anti-CD20 Reference Antibody (obinutuzumab) is more than 95%, determined by SEC-HPLC.



Immobilized human CD20 His at 2 $\mu\text{g/mL}$ can bind Anti-CD20 Reference Antibody (obinutuzumab), $\text{EC}_{50}=0.0054 \mu\text{g/mL}$.

Please note: All products are 'FOR RESEARCH USE ONLY. NOT FOR USE IN DIAGNOSTIC OR THERAPEUTIC PROCEDURES'.