

# Anti-Amyloid Beta Reference Antibody (lecanemab)

Recombinant Antibody  
 Catalog # APR10010

## Product Information

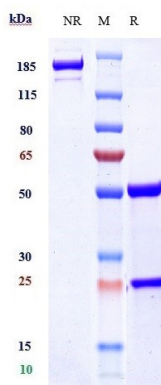
<b>Application</b>	FC, Kinetics, Animal Model
<b>Primary Accession</b>	<a href="#">P05067</a>
<b>Reactivity</b>	Human
<b>Clonality</b>	Monoclonal
<b>Isotype</b>	IgG1
<b>Calculated MW</b>	147 KDa

## Additional Information

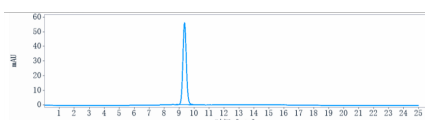
<b>Target/Specificity</b>	Amyloid Beta
<b>Endotoxin Conjugation</b>	Unconjugated
<b>Expression system</b>	CHO Cell
<b>Format</b>	Purified monoclonal antibody supplied in PBS, pH6.0, without preservative. This antibody is purified through a protein A column.

## Protein Information

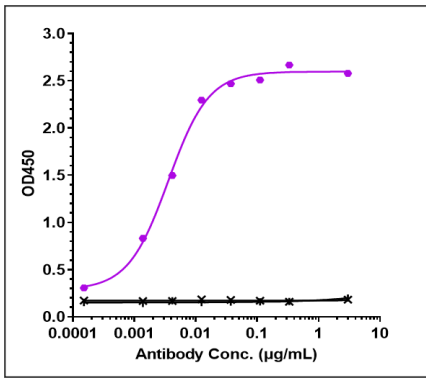
## Images



Anti-Amyloid Beta Reference Antibody (lecanemab) on SDS-PAGE under reducing (R) condition. The gel was stained with Coomassie Blue. The purity of the protein is greater than 95%



The purity of Anti-Amyloid Beta Reference Antibody (lecanemab) is more than 99.7%, determined by SEC-HPLC.



Immobilized A $\beta$ 42/A $\beta$ 40 at 2  $\mu$ g/mL can bind Anti-Amyloid Beta Reference Antibody (lecanemab), EC50=0.003559/0.002915  $\mu$ g/mL.

Please note: All products are 'FOR RESEARCH USE ONLY. NOT FOR USE IN DIAGNOSTIC OR THERAPEUTIC PROCEDURES'.