

ATG13 Antibody (N-term)

Affinity Purified Rabbit Polyclonal Antibody (Pab)
Catalog # AP9928a

Product Information

| | |
|--------------------------|------------------------|
| Application | WB, IHC-P, E |
| Primary Accession | Q75143 |
| Other Accession | Q08DY8 |
| Reactivity | Human |
| Predicted | Bovine |
| Host | Rabbit |
| Clonality | Polyclonal |
| Isotype | Rabbit IgG |
| Antigen Region | 1-30 |

Additional Information

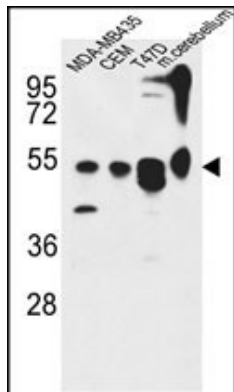
| | |
|---------------------------|--|
| Other Names | Autophagy-related protein 13, ATG13, KIAA0652 |
| Target/Specificity | This ATG13 antibody is generated from rabbits immunized with a KLH conjugated synthetic peptide between 1-30 amino acids from the N-terminal region of human ATG13. |
| Dilution | WB~~1:1000 IHC-P~~1:100~500 E~~Use at an assay dependent concentration. |
| Format | Purified polyclonal antibody supplied in PBS with 0.09% (W/V) sodium azide. This antibody is purified through a protein A column, followed by peptide affinity purification. |
| Storage | Maintain refrigerated at 2-8°C for up to 2 weeks. For long term storage store at -20°C in small aliquots to prevent freeze-thaw cycles. |
| Precautions | ATG13 Antibody (N-term) is for research use only and not for use in diagnostic or therapeutic procedures. |

Protein Information

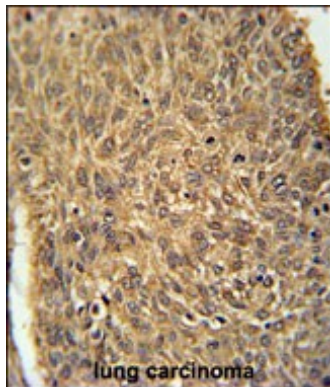
References

Hosokawa, N., et al. Autophagy 5(7):973-979(2009) Mercer, C.A., et al. Autophagy 5(5):649-662(2009) Ganley, I.G., et al. J. Biol. Chem. 284(18):12297-12305(2009) Jung, C.H., et al. Mol. Biol. Cell 20(7):1992-2003(2009) Hosokawa, N., et al. Mol. Biol. Cell 20(7):1981-1991(2009)

Images



ATG13 Antibody (N-term) (Cat. #AP9928a) western blot analysis in MDA-MB435,CEM,T47D cell line and mouse cerebellum tissue lysates (35ug/lane).This demonstrates the ATG13 antibody detected the ATG13 protein (arrow).



ATG13 Antibody (N-term) (Cat. #AP9928a) immunohistochemistry analysis in formalin fixed and paraffin embedded human lung carcinoma followed by peroxidase conjugation of the secondary antibody and DAB staining. This data demonstrates the use of the ATG13 Antibody (N-term) for immunohistochemistry. Clinical relevance has not been evaluated.

Please note: All products are 'FOR RESEARCH USE ONLY. NOT FOR USE IN DIAGNOSTIC OR THERAPEUTIC PROCEDURES'.