

NSE4A Antibody (N-term)

Affinity Purified Rabbit Polyclonal Antibody (Pab)
Catalog # AP9909a

Product Information

Application	WB, E
Primary Accession	Q9NXX6
Reactivity	Human
Host	Rabbit
Clonality	Polyclonal
Isotype	Rabbit IgG
Clone Names	RB24938
Calculated MW	44301
Antigen Region	29-57

Additional Information

Gene ID	54780
Other Names	Non-structural maintenance of chromosomes element 4 homolog A, NS4EA, Non-SMC element 4 homolog A, NSMCE4A, C10orf86
Target/Specificity	This NSE4A antibody is generated from rabbits immunized with a KLH conjugated synthetic peptide between 29-57 amino acids from the N-terminal region of human NSE4A.
Dilution	WB~~1:1000 E~~Use at an assay dependent concentration.
Format	Purified polyclonal antibody supplied in PBS with 0.09% (W/V) sodium azide. This antibody is purified through a protein A column, followed by peptide affinity purification.
Storage	Maintain refrigerated at 2-8°C for up to 2 weeks. For long term storage store at -20°C in small aliquots to prevent freeze-thaw cycles.
Precautions	NSE4A Antibody (N-term) is for research use only and not for use in diagnostic or therapeutic procedures.

Protein Information

Name	NSMCE4A
Synonyms	C10orf86
Function	Component of the SMC5-SMC6 complex, a complex involved in DNA double-strand breaks by homologous recombination. The complex may

promote sister chromatid homologous recombination by recruiting the SMC1-SMC3 cohesin complex to double-strand breaks. The complex is required for telomere maintenance via recombination in ALT (alternative lengthening of telomeres) cell lines and mediates sumoylation of shelterin complex (telosome) components which is proposed to lead to shelterin complex disassembly in ALT-associated PML bodies (APBs). Is involved in positive regulation of response to DNA damage stimulus.

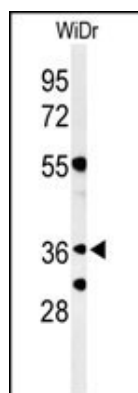
Cellular Location

Nucleus. Chromosome, telomere

References

Hu, B., et al. Mol. Microbiol. 55(6):1735-1750(2005)

Images



Western blot analysis of NSE4A Antibody (N-term) (Cat. #AP9909a) in WiDr cell line lysates (35ug/lane). NSE4A (arrow) was detected using the purified Pab.

Citations

- [SLF2 Interacts with the SMC5/6 Complex to Direct Hepatitis B Virus Episomal DNA to Promyelocytic Leukemia Bodies for Transcriptional Repression](#)
- [PJA1 Coordinates with the SMC5/6 Complex to Restrict DNA Viruses and Episomal Genes through Interferon-independent Manner](#)
- [HIRA Supports Hepatitis B Virus Minichromosome Establishment and Transcriptional Activity in Infected Hepatocytes](#)

Please note: All products are 'FOR RESEARCH USE ONLY. NOT FOR USE IN DIAGNOSTIC OR THERAPEUTIC PROCEDURES'.