

# HCCS Antibody (Center)

Affinity Purified Rabbit Polyclonal Antibody (Pab)

Catalog # AP9883c

## Product Information

---

<b>Application</b>	IHC-P, WB, E
<b>Primary Accession</b>	<a href="#">P53701</a>
<b>Other Accession</b>	<a href="#">Q5F339</a> , <a href="#">A5PJG7</a>
<b>Reactivity</b>	Human
<b>Predicted</b>	Bovine, Chicken
<b>Host</b>	Rabbit
<b>Clonality</b>	Polyclonal
<b>Isotype</b>	Rabbit IgG
<b>Clone Names</b>	RB24043
<b>Calculated MW</b>	30602
<b>Antigen Region</b>	173-200

## Additional Information

---

<b>Gene ID</b>	3052
<b>Other Names</b>	Cytochrome c-type heme lyase, CCHL, Holocytochrome c-type synthase, HCCS, CCHL
<b>Target/Specificity</b>	This HCCS antibody is generated from rabbits immunized with a KLH conjugated synthetic peptide between 173-200 amino acids from the Central region of human HCCS.
<b>Dilution</b>	IHC-P~~1:100~500 WB~~1:1000 E~~Use at an assay dependent concentration.
<b>Format</b>	Purified polyclonal antibody supplied in PBS with 0.09% (W/V) sodium azide. This antibody is purified through a protein A column, followed by peptide affinity purification.
<b>Storage</b>	Maintain refrigerated at 2-8°C for up to 2 weeks. For long term storage store at -20°C in small aliquots to prevent freeze-thaw cycles.
<b>Precautions</b>	HCCS Antibody (Center) is for research use only and not for use in diagnostic or therapeutic procedures.

## Protein Information

---

<b>Name</b>	HCCS ( <a href="#">HGNC:4837</a> )
<b>Synonyms</b>	CCHL

**Function** Lyase that catalyzes the covalent linking of the heme group to the cytochrome C apoprotein to produce the mature functional cytochrome.

**Cellular Location** Mitochondrion inner membrane. Membrane; Lipid-anchor

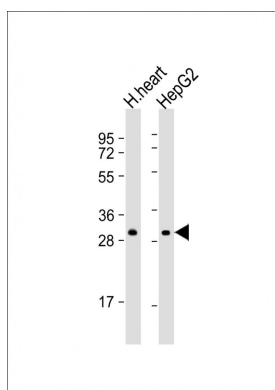
## Background

The protein encoded by this gene is an enzyme that covalently links a heme group to the apoprotein of cytochrome c. Defects in this gene are a cause of microphthalmia syndromic type 7 (MCOPS7). Three transcript variants encoding the same protein have been found for this gene.

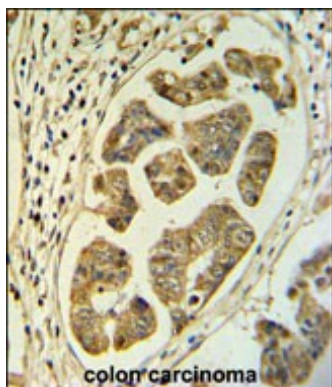
## References

Need, A.C., et al. Hum. Mol. Genet. 18(23):4650-4661(2009)  
Wimplinger, I., et al. Mol. Vis. 13, 1475-1482 (2007)  
Wimplinger, I., et al. Am. J. Hum. Genet. 79(5):878-889(2006)  
Nakashima-Kamimura, N., et al. J. Cell. Sci. 118 (PT 22), 5357-5367 (2005)  
Prakash, S.K., et al. Hum. Mol. Genet. 11(25):3237-3248(2002)

## Images



All lanes : Anti-HCCS Antibody (Center) at 1:4000 dilution  
Lane 1: human heart lysate Lane 2: HepG2 whole cell lysate  
Lysates/proteins at 20 µg per lane. Secondary Goat Anti-Rabbit IgG, (H+L), Peroxidase conjugated at 1/10000 dilution. Predicted band size : 31 kDa  
Blocking/Dilution buffer: 5% NFDM/TBST.



HCCS Antibody (Center) (Cat. #AP9883c) IHC analysis in formalin fixed and paraffin embedded colon carcinoma followed by peroxidase conjugation of the secondary antibody and DAB staining. This data demonstrates the use of the HCCS Antibody (Center) for immunohistochemistry. Clinical relevance has not been evaluated.

Please note: All products are 'FOR RESEARCH USE ONLY. NOT FOR USE IN DIAGNOSTIC OR THERAPEUTIC PROCEDURES'.