

VTCN1 Antibody (Center)

Affinity Purified Rabbit Polyclonal Antibody (Pab)

Catalog # AP9802c

Product Information

Application	WB, E
Primary Accession	Q7Z7D3
Reactivity	Human
Host	Rabbit
Clonality	Polyclonal
Isotype	Rabbit IgG
Clone Names	RB25449
Calculated MW	30878
Antigen Region	72-100

Additional Information

Gene ID	79679
Other Names	V-set domain-containing T-cell activation inhibitor 1, B7 homolog 4, B7-H4, B7h5, Immune costimulatory protein B7-H4, Protein B7S1, T-cell costimulatory molecule B7x, VTCN1
Target/Specificity	This VTCN1 antibody is generated from rabbits immunized with a KLH conjugated synthetic peptide between 72-100 amino acids from the Central region of human VTCN1.
Dilution	WB~~1:1000 E~~Use at an assay dependent concentration.
Format	Purified polyclonal antibody supplied in PBS with 0.09% (W/V) sodium azide. This antibody is purified through a protein A column, followed by peptide affinity purification.
Storage	Maintain refrigerated at 2-8°C for up to 2 weeks. For long term storage store at -20°C in small aliquots to prevent freeze-thaw cycles.
Precautions	VTCN1 Antibody (Center) is for research use only and not for use in diagnostic or therapeutic procedures.

Protein Information

Name	VTCN1 {ECO:0000312 EMBL:EAW56672.1}
Function	Negatively regulates T-cell-mediated immune response by inhibiting T-cell activation, proliferation, cytokine production and development of cytotoxicity. When expressed on the cell surface of tumor macrophages, plays an

important role, together with regulatory T- cells (Treg), in the suppression of tumor-associated antigen-specific T-cell immunity. Involved in promoting epithelial cell transformation.

Cellular Location

Cell membrane; Single-pass type I membrane protein. Note=Expressed at the cell surface. A soluble form has also been detected. {ECO:0000255, ECO:0000269|PubMed:12818165, ECO:0000269|PubMed:15878339, ECO:0000269|PubMed:16782226}

Tissue Location

Overexpressed in breast, ovarian, endometrial, renal cell (RCC) and non-small-cell lung cancers (NSCLC). Expressed on activated T- and B-cells, monocytes and dendritic cells, but not expressed in most normal tissues (at protein level). Widely expressed, including in kidney, liver, lung, ovary, placenta, spleen and testis

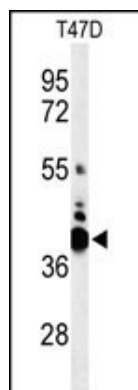
Background

VTCN1 belongs to the B7 family (see CD80; MIM 112203) of costimulatory proteins. These proteins are expressed on the surface of antigen-presenting cells and interact with ligands (e.g., CD28; MIM 186760) on T lymphocytes.

References

Xue, Q., et al. Stem Cells Dev. 19(1):27-38(2010)
Cheng, L., et al. Int. J. Gynecol. Cancer 19(9):1481-1486(2009)
Hinks, A., et al. Arthritis Rheum. 60(1):258-263(2009)
Zhang, J., et al. BMC Cancer 9, 394 (2009) :
Thompson, R.H., et al. Cancer Res. 68(15):6054-6058(2008)
Clark, H.F., et al. Genome Res. 13(10):2265-2270(2003)
Zang, X., et al. Proc. Natl. Acad. Sci. U.S.A. 100(18):10388-10392(2003)

Images



Western blot analysis of VTCN1 Antibody (Center) (Cat. #AP9802c) in T47D cell line lysates (35ug/lane). VTCN1 (arrow) was detected using the purified Pab.

Please note: All products are 'FOR RESEARCH USE ONLY. NOT FOR USE IN DIAGNOSTIC OR THERAPEUTIC PROCEDURES'.