

PATL1 Antibody (C-term)

Affinity Purified Rabbit Polyclonal Antibody (Pab)

Catalog # AP9796b

Product Information

Application	WB, IHC-P, FC, E
Primary Accession	Q86TB9
Other Accession	B5DF93 , Q3TC46
Reactivity	Human
Predicted	Mouse, Rat
Host	Rabbit
Clonality	Polyclonal
Isotype	Rabbit IgG
Clone Names	RB24821
Calculated MW	86850
Antigen Region	489-518

Additional Information

Gene ID	219988
Other Names	Protein PAT1 homolog 1, PAT1-like protein 1, Protein PAT1 homolog b, Pat1b, hPat1b, PATL1
Target/Specificity	This PATL1 antibody is generated from rabbits immunized with a KLH conjugated synthetic peptide between 489-518 amino acids from the C-terminal region of human PATL1.
Dilution	WB~~1:1000 IHC-P~~1:100~500 FC~~1:10~50 E~~Use at an assay dependent concentration.
Format	Purified polyclonal antibody supplied in PBS with 0.09% (W/V) sodium azide. This antibody is purified through a protein A column, followed by peptide affinity purification.
Storage	Maintain refrigerated at 2-8°C for up to 2 weeks. For long term storage store at -20°C in small aliquots to prevent freeze-thaw cycles.
Precautions	PATL1 Antibody (C-term) is for research use only and not for use in diagnostic or therapeutic procedures.

Protein Information

Name	PATL1
Function	RNA-binding protein involved in deadenylation-dependent decapping of

mRNAs, leading to the degradation of mRNAs (PubMed:[17936923](#), PubMed:[20543818](#), PubMed:[20584987](#), PubMed:[20852261](#)). Acts as a scaffold protein that connects deadenylation and decapping machinery (PubMed:[17936923](#), PubMed:[20543818](#), PubMed:[20584987](#), PubMed:[20852261](#)). Required for cytoplasmic mRNA processing body (P-body) assembly (PubMed:[17936923](#), PubMed:[20543818](#), PubMed:[20584987](#), PubMed:[20852261](#)).

Cellular Location

Cytoplasm, P-body. Nucleus. Nucleus, PML body. Nucleus speckle. Note=Predominantly cytoplasmic (PubMed:22090346). Shuttles between the nucleus and the cytoplasm in a CRM1-dependent manner (PubMed:22090346). Enriched in splicing speckles Localization to nuclear foci and speckles requires active transcription. Excluded from the nucleolus (PubMed:22090346)

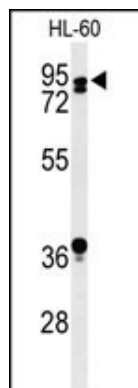
Tissue Location

Ubiquitous..

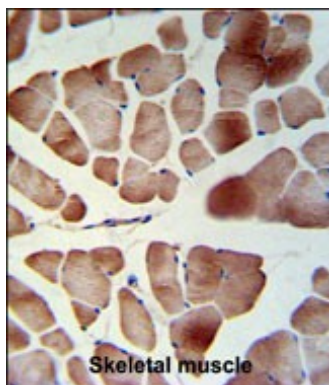
References

Scheller, N., et al. Biochim. Biophys. Acta 1773(12):1786-1792(2007)
Beausoleil, S.A., et al. Proc. Natl. Acad. Sci. U.S.A. 101(33):12130-12135(2004)

Images

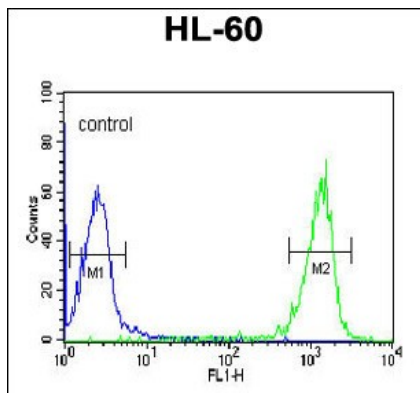


Western blot analysis of PATL1 Antibody (C-term) (Cat. #AP9796b) in HL-60 cell line lysates (35ug/lane). PATL1 (arrow) was detected using the purified Pab.



PATL1 Antibody (C-term) (Cat. #AP9796b) IHC analysis in formalin fixed and paraffin embedded skeletal muscle followed by peroxidase conjugation of the secondary antibody and DAB staining. This data demonstrates the use of the PATL1 Antibody (C-term) for immunohistochemistry. Clinical relevance has not been evaluated.

PATL1 Antibody (C-term) (Cat. #AP9796b) flow cytometric analysis of HL-60 cells (right histogram) compared to a negative control cell (left histogram). FITC-conjugated goat-anti-rabbit secondary antibodies were used for the analysis.



Please note: All products are 'FOR RESEARCH USE ONLY. NOT FOR USE IN DIAGNOSTIC OR THERAPEUTIC PROCEDURES'.