

# GRPR Antibody (Center)

Affinity Purified Rabbit Polyclonal Antibody (Pab)  
Catalog # AP9790c

## Product Information

---

<b>Application</b>	WB, IHC-P, FC, E
<b>Primary Accession</b>	<a href="#">P30550</a>
<b>Other Accession</b>	<a href="#">P52500</a> , <a href="#">P21729</a>
<b>Reactivity</b>	Human, Mouse, Rat
<b>Predicted</b>	Mouse, Rat
<b>Host</b>	Rabbit
<b>Clonality</b>	Polyclonal
<b>Isotype</b>	Rabbit IgG
<b>Clone Names</b>	RB24634
<b>Antigen Region</b>	123-152

## Additional Information

---

<b>Other Names</b>	Gastrin-releasing peptide receptor, GRP-R, GRP-preferring bombesin receptor, GRPR
<b>Target/Specificity</b>	This GRPR antibody is generated from rabbits immunized with a KLH conjugated synthetic peptide between 123-152 amino acids from the Central region of human GRPR.
<b>Dilution</b>	WB~~1:1000 IHC-P~~1:100~500 FC~~1:10~50 E~~Use at an assay dependent concentration.
<b>Format</b>	Purified polyclonal antibody supplied in PBS with 0.09% (W/V) sodium azide. This antibody is purified through a protein A column, followed by peptide affinity purification.
<b>Storage</b>	Maintain refrigerated at 2-8°C for up to 2 weeks. For long term storage store at -20°C in small aliquots to prevent freeze-thaw cycles.
<b>Precautions</b>	GRPR Antibody (Center) is for research use only and not for use in diagnostic or therapeutic procedures.

## Protein Information

---

### Background

---

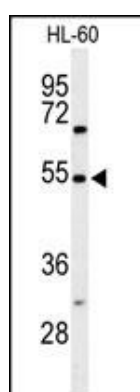
Gastrin-releasing peptide (GRP) regulates numerous functions of the gastrointestinal and central nervous systems, including release of gastrointestinal hormones, smooth muscle cell contraction, and epithelial cell proliferation and is a potent mitogen for neoplastic tissues. The effects of GRP are mediated through the

gastrin-releasing peptide receptor. This receptor is a glycosylated, 7-transmembrane G-protein coupled receptor that activates the phospholipase C signaling pathway. The receptor is aberrantly expressed in numerous cancers such as those of the lung, colon, and prostate. An individual with autism and multiple exostoses was found to have a balanced translocation between chromosome 8 and a chromosome X breakpoint located within the gastrin-releasing peptide receptor gene.

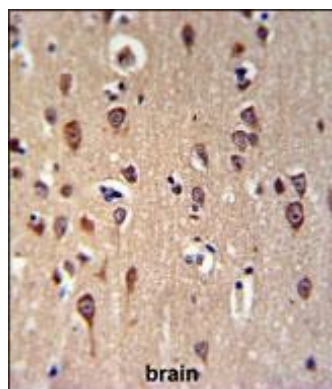
## References

- Guey, L.T., et al. *Eur. Urol.* 57(2):283-292(2010)  
Chapuis, J., et al. *Mol. Psychiatry* 14(11):1004-1016(2009)  
Chao, C., et al. *J. Surg. Res.* 156(1):26-31(2009)  
Ananias, H.J., et al. *Prostate* 69(10):1101-1108(2009)  
Fleischmann, A., et al. *Endocr. Relat. Cancer* 16(2):623-633(2009)

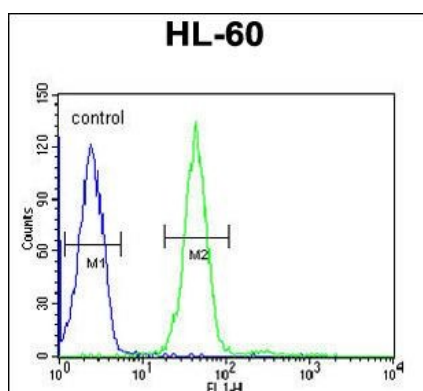
## Images



Western blot analysis of GRPR Antibody (Center) (Cat. #AP9790c) in HL-60 cell line lysates (35ug/lane). GRPR (arrow) was detected using the purified Pab.



GRPR Antibody (Center) (Cat. #AP9790c) IHC analysis in formalin fixed and paraffin embedded brain tissue followed by peroxidase conjugation of the secondary antibody and DAB staining. This data demonstrates the use of the GRPR Antibody (Center) for immunohistochemistry. Clinical relevance has not been evaluated.



GRPR Antibody (Center) (Cat. #AP9790c) flow cytometric analysis of HL-60 cells (right histogram) compared to a negative control cell (left histogram). FITC-conjugated goat-anti-rabbit secondary antibodies were used for the analysis.