

FXRD1 Antibody (C-term)

Affinity Purified Rabbit Polyclonal Antibody (Pab)
Catalog # AP9655b

Product Information

Application	WB, E
Primary Accession	Q96CU9
Reactivity	Human
Host	Rabbit
Clonality	Polyclonal
Isotype	Rabbit IgG
Clone Names	RB24352
Antigen Region	347-377

Additional Information

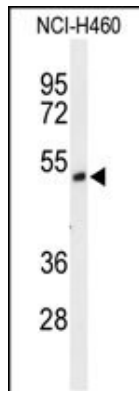
Other Names	FAD-dependent oxidoreductase domain-containing protein 1, 1---, FOXRED1
Target/Specificity	This FXRD1 antibody is generated from rabbits immunized with a KLH conjugated synthetic peptide between 347-377 amino acids from the C-terminal region of human FXRD1.
Dilution	WB~~1:1000 E~~Use at an assay dependent concentration.
Format	Purified polyclonal antibody supplied in PBS with 0.09% (W/V) sodium azide. This antibody is purified through a protein A column, followed by peptide affinity purification.
Storage	Maintain refrigerated at 2-8°C for up to 2 weeks. For long term storage store at -20°C in small aliquots to prevent freeze-thaw cycles.
Precautions	FXRD1 Antibody (C-term) is for research use only and not for use in diagnostic or therapeutic procedures.

Protein Information

References

Lehner, B., et al. Genome Res. 14(7):1315-1323(2004)
Simpson, J.C., et al. EMBO Rep. 1(3):287-292(2000)

Images



Western blot analysis of FXRD1 Antibody (C-term) (Cat. #AP9655b) in NCI-H460 cell line lysates (35ug/lane). FXRD1 (arrow) was detected using the purified Pab.

Please note: All products are 'FOR RESEARCH USE ONLY. NOT FOR USE IN DIAGNOSTIC OR THERAPEUTIC PROCEDURES'.