

# PDHA1 Antibody

Affinity Purified Rabbit Polyclonal Antibody (Pab)

Catalog # AP9652d

## Product Information

---

Application	WB, E
Primary Accession	<a href="#">P08559</a>
Other Accession	<a href="#">NP_000275.1</a>
Reactivity	Human
Host	Rabbit
Clonality	Polyclonal
Isotype	Rabbit IgG
Clone Names	RB23157
Calculated MW	43296

## Additional Information

---

Gene ID	5160
Other Names	Pyruvate dehydrogenase E1 component subunit alpha, somatic form, mitochondrial, PDHE1-A type I, PDHA1, PHE1A
Target/Specificity	This PDHA1 Antibody is generated from rabbits immunized with recombinant protein of human PDHA1.
Dilution	WB~~1:1000 E~~Use at an assay dependent concentration.
Format	Purified polyclonal antibody supplied in PBS with 0.09% (W/V) sodium azide. This antibody is purified through a protein A column, followed by peptide affinity purification.
Storage	Maintain refrigerated at 2-8°C for up to 2 weeks. For long term storage store at -20°C in small aliquots to prevent freeze-thaw cycles.
Precautions	PDHA1 Antibody is for research use only and not for use in diagnostic or therapeutic procedures.

## Protein Information

---

Name	PDHA1 ( <a href="#">HGNC:8806</a> )
Synonyms	PHE1A
Function	Together with PDHB forms the heterotetrameric E1 subunit of the pyruvate dehydrogenase (PDH) complex (PubMed: <a href="#">17474719</a> , PubMed: <a href="#">19081061</a> ). The PDH complex catalyzes the overall conversion of pyruvate to acetyl-CoA and

CO(2), and thereby links cytoplasmic glycolysis and the mitochondrial tricarboxylic acid (TCA) cycle (PubMed:[19081061](#), PubMed:[7782287](#)). It contains multiple copies of three enzymatic components: pyruvate dehydrogenase (E1), dihydrolipoamide acetyltransferase (E2) and dihydrolipoamide dehydrogenase (E3) (Probable). The E1 subunit catalyzes both the thiamine pyrophosphate (TPP)-dependent decarboxylation of pyruvate and the reductive acetylation of a lipoyl group covalently linked to the lipoyl-bearing domains of E2 (PubMed:[17474719](#), PubMed:[19081061](#), PubMed:[7782287](#)).

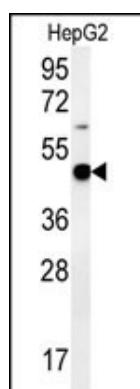
**Cellular Location**

Mitochondrion matrix {ECO:0000250 | UniProtKB:P26284}

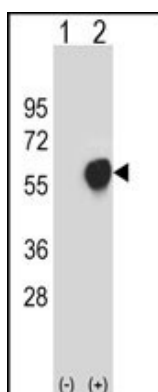
**Tissue Location**

Ubiquitous.

## Images



PDHA1 Antibody (Cat. #AP9652d) western blot analysis in HepG2 cell line lysates (35ug/lane). This demonstrates the PDHA1 antibody detected the PDHA1 protein (arrow).



Western blot analysis of PDHA1 (arrow) using rabbit polyclonal PDHA1 Antibody (Cat. #AP9652d). 293 cell lysates (2 ug/lane) either nontransfected (Lane 1) or transiently transfected (Lane 2) with the PDHA1 gene.

Please note: All products are 'FOR RESEARCH USE ONLY. NOT FOR USE IN DIAGNOSTIC OR THERAPEUTIC PROCEDURES'.