

CHAT Antibody (N-term)

Purified Rabbit Polyclonal Antibody (Pab)

Catalog # AP9593a

Product Information

Application	WB, IF, E
Primary Accession	P28329
Reactivity	Human, Mouse
Host	Rabbit
Clonality	Polyclonal
Isotype	Rabbit IgG
Clone Names	RB18046
Calculated MW	82536
Antigen Region	98-128

Additional Information

Gene ID	1103
Other Names	Choline O-acetyltransferase, CHOACTase, ChAT, Choline acetylase, CHAT
Target/Specificity	This CHAT antibody is generated from rabbits immunized with a KLH conjugated synthetic peptide between 98-128 amino acids from the N-terminal region of human CHAT.
Dilution	WB~~1:1000 IF~~1:10~50 E~~Use at an assay dependent concentration.
Format	Purified polyclonal antibody supplied in PBS with 0.09% (W/V) sodium azide. This antibody is prepared by Saturated Ammonium Sulfate (SAS) precipitation followed by dialysis against PBS.
Storage	Maintain refrigerated at 2-8°C for up to 2 weeks. For long term storage store at -20°C in small aliquots to prevent freeze-thaw cycles.
Precautions	CHAT Antibody (N-term) is for research use only and not for use in diagnostic or therapeutic procedures.

Protein Information

Name	CHAT
Function	Catalyzes the reversible synthesis of acetylcholine (ACh) from acetyl CoA and choline at cholinergic synapses.

Background

CHAT is an enzyme which catalyzes the biosynthesis of the neurotransmitter acetylcholine. This gene product is a characteristic feature of cholinergic neurons, and changes in these neurons may explain some of the symptoms of Alzheimer disease.

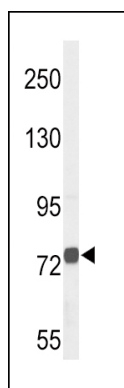
References

Shaffer, J.R., et al. Nutr Metab Cardiovasc Dis (2010) In press

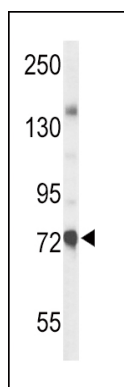
Beck, M., et al. Cell Tissue Res. 338(1):37-51(2009)

Need, A.C., et al. Eur. J. Hum. Genet. 17(7):946-957(2009)

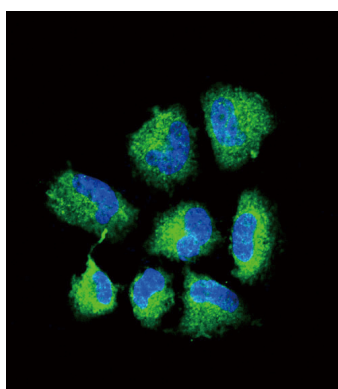
Images



Western blot analysis of CHAT Antibody (N-term) (Cat. #AP9593a) in NCI-H460 cell line lysates (35ug/lane). CHAT (arrow) was detected using the purified Pab.



Western blot analysis of CHAT Antibody (N-term) (Cat. #AP9593a) in mouse liver tissue lysates (35ug/lane). CHAT (arrow) was detected using the purified Pab.



Confocal immunofluorescent analysis of CHAT Antibody (N-term) (Cat. #AP9593a) with NCI-H460 cell followed by Alexa Fluor 488-conjugated goat anti-rabbit IgG (green). DAPI was used to stain the cell nuclear (blue).

Please note: All products are 'FOR RESEARCH USE ONLY. NOT FOR USE IN DIAGNOSTIC OR THERAPEUTIC PROCEDURES'.