

LRRC4 Antibody (C-term)

Affinity Purified Rabbit Polyclonal Antibody (Pab)

Catalog # AP9530b

Product Information

| | |
|--------------------------|---|
| Application | WB, IHC-P, E |
| Primary Accession | Q9HBW1 |
| Other Accession | Q45R42 , Q99PH1 |
| Reactivity | Human |
| Predicted | Mouse, Rat |
| Host | Rabbit |
| Clonality | Polyclonal |
| Isotype | Rabbit IgG |
| Clone Names | RB24095 |
| Calculated MW | 72717 |
| Antigen Region | 531-559 |

Additional Information

| | |
|---------------------------|--|
| Gene ID | 64101 |
| Other Names | Leucine-rich repeat-containing protein 4, Brain tumor-associated protein BAG, Nasopharyngeal carcinoma-associated gene 14 protein, Netrin-G2 ligand, NGL-2, LRRC4, BAG |
| Target/Specificity | This LRRC4 antibody is generated from rabbits immunized with a KLH conjugated synthetic peptide between 531-559 amino acids from the C-terminal region of human LRRC4. |
| Dilution | WB~~1:1000 IHC-P~~1:100~500 E~~Use at an assay dependent concentration. |
| Format | Purified polyclonal antibody supplied in PBS with 0.09% (W/V) sodium azide. This antibody is purified through a protein A column, followed by peptide affinity purification. |
| Storage | Maintain refrigerated at 2-8°C for up to 2 weeks. For long term storage store at -20°C in small aliquots to prevent freeze-thaw cycles. |
| Precautions | LRRC4 Antibody (C-term) is for research use only and not for use in diagnostic or therapeutic procedures. |

Protein Information

| | |
|-----------------|-------|
| Name | LRRC4 |
| Synonyms | BAG |

| | |
|--------------------------|--|
| Function | Synaptic adhesion protein. Regulates the formation of excitatory synapses through the recruitment of pre-and-postsynaptic proteins. Organize the lamina/pathway-specific differentiation of dendrites. Plays an important role for auditory synaptic responses. Involved in the suppression of glioma (By similarity). |
| Cellular Location | Membrane; Single-pass type I membrane protein. Postsynaptic cell membrane. Note=LRRC4 and DLG4 are interdependent for synaptic localization. |
| Tissue Location | Specifically expressed in brain. |

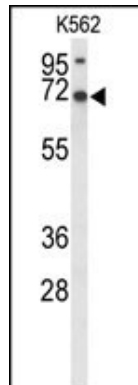
Background

The exact function of LRRC4 is unknown.

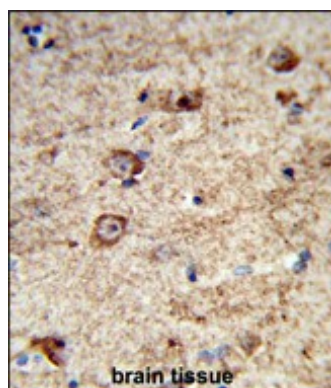
References

Wu, M., et al. J. Cell. Physiol. 214(1):65-74(2008)
Zhang, Z., et al. BMC Mol. Biol. 9, 99 (2008) :
Wu, M., et al. J. Neurooncol. 80(2):133-142(2006)
Wu, M., et al. Mol. Biol. Cell 17(8):3534-3542(2006)
Zhang, Q.H., et al. Acta Biochim. Biophys. Sin. (Shanghai) 37(10):680-687(2005)
Zhang, Q.H., et al. Acta Biochim. Biophys. Sin. (Shanghai) 37(8):532-540(2005)

Images



Western blot analysis of LRRC4 Antibody (C-term) (Cat. #AP9530b) in K562 cell line lysates (35ug/lane). LRRC4 (arrow) was detected using the purified Pab.



Formalin-fixed and paraffin-embedded human brain tissue reacted with LRRC4 Antibody (C-term), which was peroxidase-conjugated to the secondary antibody, followed by DAB staining. This data demonstrates the use of this antibody for immunohistochemistry; clinical relevance has not been evaluated.

Citations

- [Global analysis of DNA methylation in hepatocellular carcinoma by a liquid hybridization capture-based bisulfite sequencing approach.](#)

Please note: All products are 'FOR RESEARCH USE ONLY. NOT FOR USE IN DIAGNOSTIC OR THERAPEUTIC PROCEDURES'.