

EIF2A Antibody (Center)

Affinity Purified Rabbit Polyclonal Antibody (Pab)

Catalog # AP9521c

Product Information

Application	WB, IHC-P, FC, E
Primary Accession	Q9BY44
Reactivity	Human
Host	Rabbit
Clonality	Polyclonal
Isotype	Rabbit IgG
Clone Names	RB24073
Calculated MW	64990
Antigen Region	437-465

Additional Information

Gene ID	83939
Other Names	Eukaryotic translation initiation factor 2A, eIF-2A, 65 kDa eukaryotic translation initiation factor 2A, Eukaryotic translation initiation factor 2A, N-terminally processed, EIF2A
Target/Specificity	This EIF2A antibody is generated from rabbits immunized with a KLH conjugated synthetic peptide between 437-465 amino acids from the Central region of human EIF2A.
Dilution	WB~~1:1000 IHC-P~~1:100~500 FC~~1:10~50 E~~Use at an assay dependent concentration.
Format	Purified polyclonal antibody supplied in PBS with 0.09% (W/V) sodium azide. This antibody is purified through a protein A column, followed by peptide affinity purification.
Storage	Maintain refrigerated at 2-8°C for up to 2 weeks. For long term storage store at -20°C in small aliquots to prevent freeze-thaw cycles.
Precautions	EIF2A Antibody (Center) is for research use only and not for use in diagnostic or therapeutic procedures.

Protein Information

Name	EIF2A
Function	Functions in the early steps of protein synthesis of a small number of specific mRNAs. Acts by directing the binding of methionyl- tRNAi to 40S

ribosomal subunits. In contrast to the eIF-2 complex, it binds methionyl-tRNAi to 40S subunits in a codon-dependent manner, whereas the eIF-2 complex binds methionyl-tRNAi to 40S subunits in a GTP-dependent manner.

Tissue Location

Widely expressed. Expressed at higher level in pancreas, heart, brain and placenta.

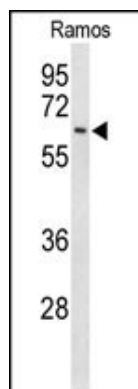
Background

EIF2A is a 65-kD protein that catalyzes the formation of puromycin-sensitive 80S preinitiation complexes (Zoll et al., 2002 [PubMed 12133843]).

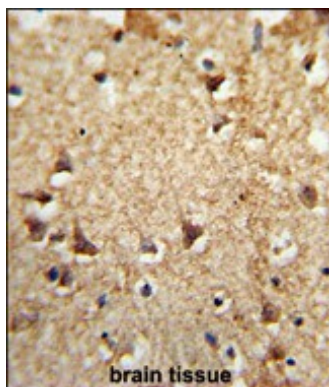
References

Willis, K.L., et al. Virology 394(1):73-81(2009)
Spurgeon, M.E., et al. J. Virol. 83(19):9970-9982(2009)
Lu, W., et al. J. Biol. Chem. 284(36):24281-24288(2009)
Yang, J., et al. Mol. Cell. Biol. 29(8):2243-2253(2009)
Schewe, D.M., et al. Cancer Res. 69(4):1545-1552(2009)
Olsen, J.V., et al. Cell 127(3):635-648(2006)

Images

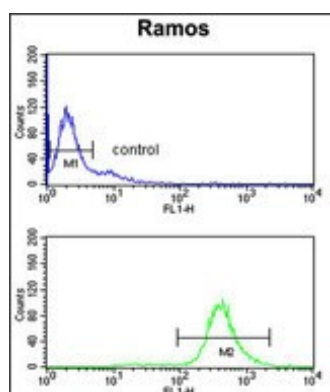


Western blot analysis of EIF2A Antibody (Center) (Cat. #AP9521c) in Ramos cell line lysates (35ug/lane). EIF2A (arrow) was detected using the purified Pab.



Formalin-fixed and paraffin-embedded human brain tissue reacted with EIF2A Antibody (Center), which was peroxidase-conjugated to the secondary antibody, followed by DAB staining. This data demonstrates the use of this antibody for immunohistochemistry; clinical relevance has not been evaluated.

EIF2A Antibody (Center) (Cat. #AP9521c) flow cytometry analysis of Ramos cells (bottom histogram) compared to a negative control cell (top histogram). FITC-conjugated goat-anti-rabbit secondary antibodies were used for the analysis.



Please note: All products are 'FOR RESEARCH USE ONLY. NOT FOR USE IN DIAGNOSTIC OR THERAPEUTIC PROCEDURES'.