

# RAB42 Rabbit pAb

RAB42 Rabbit pAb  
Catalog # AP94842

## Product Information

---

<b>Application</b>	FC
<b>Primary Accession</b>	<a href="#">Q8N4Z0</a>
<b>Reactivity</b>	Human
<b>Host</b>	Rabbit
<b>Clonality</b>	Polyclonal
<b>Calculated MW</b>	24133
<b>Physical State</b>	Liquid
<b>Immunogen</b>	KLH conjugated synthetic peptide derived from human RAB42
<b>Epitope Specificity</b>	31-105/105
<b>Isotype</b>	IgG
<b>Purity</b>	affinity purified by Protein A
<b>Buffer</b>	Preservative: 0.02% Proclin300, Constituents: 1% BSA, 0.01M PBS, pH7.4.
<b>SUBCELLULAR LOCATION</b>	Membrane.
<b>SIMILARITY</b>	Belongs to the small GTPase superfamily. Rab family.
<b>Important Note</b>	This product as supplied is intended for research use only, not for use in human, therapeutic or diagnostic applications.

## Additional Information

---

<b>Gene ID</b>	115273
<b>Other Names</b>	Ras-related protein Rab-42, 3.6.5.2, RAB42 ( <a href="#">HGNC:28702</a> )
<b>Dilution</b>	Flow-Cyt=2ug/Test
<b>Format</b>	0.01M TBS(pH7.4) with 1% BSA, 0.09% (W/V) sodium azide and 50% Glyce
<b>Storage</b>	Store at -20 °C for one year. Avoid repeated freeze/thaw cycles. When reconstituted in sterile pH 7.4 0.01M PBS or diluent of antibody the antibody is stable for at least two weeks at 2-4 °C.

## Protein Information

---

<b>Name</b>	RAB42 ( <a href="#">HGNC:28702</a> )
<b>Function</b>	The small GTPases Rab are key regulators of intracellular membrane trafficking, from the formation of transport vesicles to their fusion with membranes. Rabs cycle between an inactive GDP-bound form and an active GTP-bound form that is able to recruit to membranes different sets of downstream effectors directly responsible for vesicle formation, movement,

tethering and fusion (By similarity). The physiological function of RAB42 remains undefined (Probable).

## Cellular Location

Membrane {ECO:0000250|UniProtKB:P62820}; Lipid- anchor {ECO:0000250|UniProtKB:P62820}

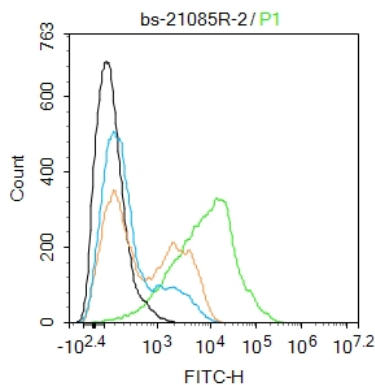
## Background

---

This product as supplied is intended for research use only, not for use in human, therapeutic or diagnostic applications.

## Images

---



Blank control:THP-1. Primary Antibody (green line): Rabbit Anti-RAB42 antibody (AP94842) Dilution: 2 µg /10<sup>6</sup> cells; Isotype Control Antibody (orange line): Rabbit IgG . Secondary Antibody : Goat anti-rabbit IgG-FITC Dilution: 1 µg /test. Protocol The cells were incubated in 5%BSA to block non-specific protein-protein interactions for 30 min at room temperature .Cells stained with Primary Antibody for 30 min at room temperature. The secondary antibody used for 40 min at room temperature. Acquisition of 20,000 events was performed.

Please note: All products are 'FOR RESEARCH USE ONLY. NOT FOR USE IN DIAGNOSTIC OR THERAPEUTIC PROCEDURES'.