

LDHA Recombinant Rabbit mAb

LDHA Recombinant Rabbit mAb
Catalog # AP94838

Product Information

Application	WB, IHC-P, IHC-F, IF, IP
Primary Accession	P00338
Reactivity	Human, Mouse, Rat
Host	Rabbit
Clonality	Recombinant
Calculated MW	36689
Physical State	Liquid
Immunogen	KLH conjugated synthetic peptide derived from human LDHA
Isotype	IgG
Purity	affinity purified by Protein A
Buffer	10mM phosphate buffered saline(pH 7.4) with 150mM sodium chloride, 0.05% BSA, 0.02% sodium azide and 50% glycerol.
SUBCELLULAR LOCATION	Cytoplasm.
SIMILARITY	Belongs to the LDH/MDH superfamily. LDH family.
SUBUNIT	Homotetramer.
Post-translational modifications	ISGylated.
DISEASE	Glycogen storage disease 11 (GSD11) [MIM:612933]: A metabolic disorder that results in exertional myoglobinuria, pain, cramps and easy fatigue. Note=The disease is caused by mutations affecting the gene represented in this entry.
Important Note	This product as supplied is intended for research use only, not for use in human, therapeutic or diagnostic applications.

Additional Information

Gene ID	3939
Other Names	L-lactate dehydrogenase A chain, LDH-A, 1.1.1.27, Cell proliferation-inducing gene 19 protein, LDH muscle subunit, LDH-M, Renal carcinoma antigen NY-REN-59, LDHA (HGNC:6535)
Target/Specificity	Metabolism of carbohydrates, Dehydrogenase Kits, NADP/NADPH, Carbohydrate metabolism, Energy Metabolism, Cancer, Energy Metabolism
Dilution	WB=1:500-2000, IHC-P=1:50-200, IHC-F=1:50-200, ICC/IF=1:50-200, IF=1:50-200, IP=1:20-50, Flow-Cyt=1:50-100
Storage	Store at -20 °C for one year. Avoid repeated freeze/thaw cycles. When reconstituted in sterile pH 7.4 0.01M PBS or diluent of antibody the antibody is stable for at least two weeks at 2-4 °C.

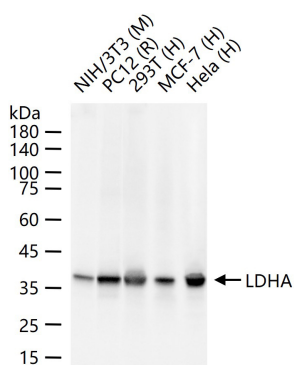
Protein Information

Name	LDHA (HGNC:6535)
Function	Interconverts simultaneously and stereospecifically pyruvate and lactate with concomitant interconversion of NADH and NAD(+).
Cellular Location	Cytoplasm.
Tissue Location	Predominantly expressed in anaerobic tissues such as skeletal muscle and liver.

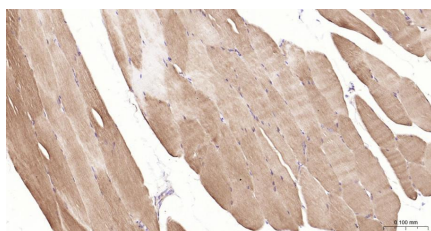
Background

Interconverts simultaneously and stereospecifically pyruvate and lactate with concomitant interconversion of NADH and NAD+.

Images



25 ug total protein per lane of various lysates (see on figure) probed with LDHA monoclonal antibody, unconjugated (AP94838) at 1:1000 dilution and 4°C overnight incubation. Followed by conjugated secondary antibody incubation at r.t. for 60 min.



Paraformaldehyde-fixed, paraffin embedded Mouse Skeletal muscle; Antigen retrieval by boiling in sodium citrate buffer (pH6.0) for 15 min; Antibody incubation with LDHA Monoclonal Antibody, Unconjugated(AP94838) at 1:200 overnight at 4°C, followed by conjugation to the AP94838-HRP and DAB (C-0010) staining.

Please note: All products are 'FOR RESEARCH USE ONLY. NOT FOR USE IN DIAGNOSTIC OR THERAPEUTIC PROCEDURES'.